



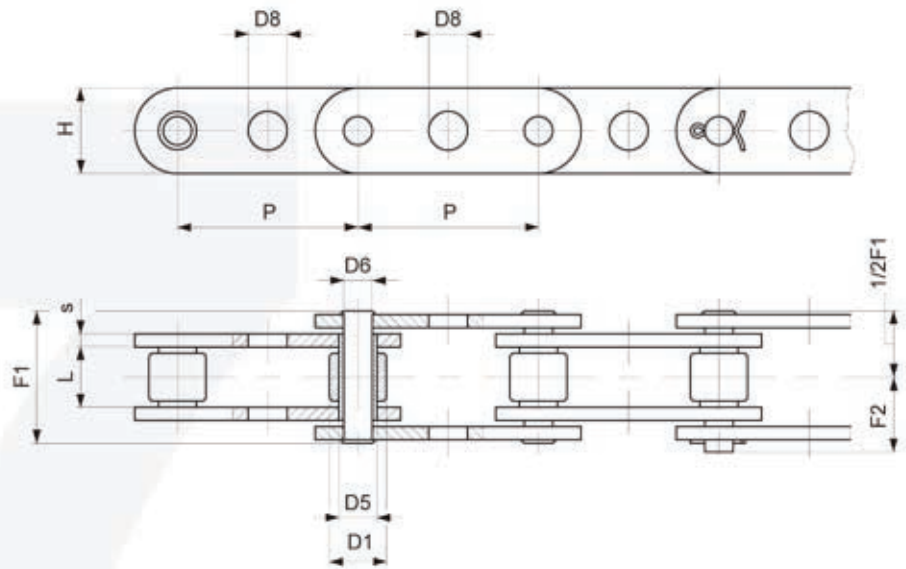
Řetězy pro speciální aplikace



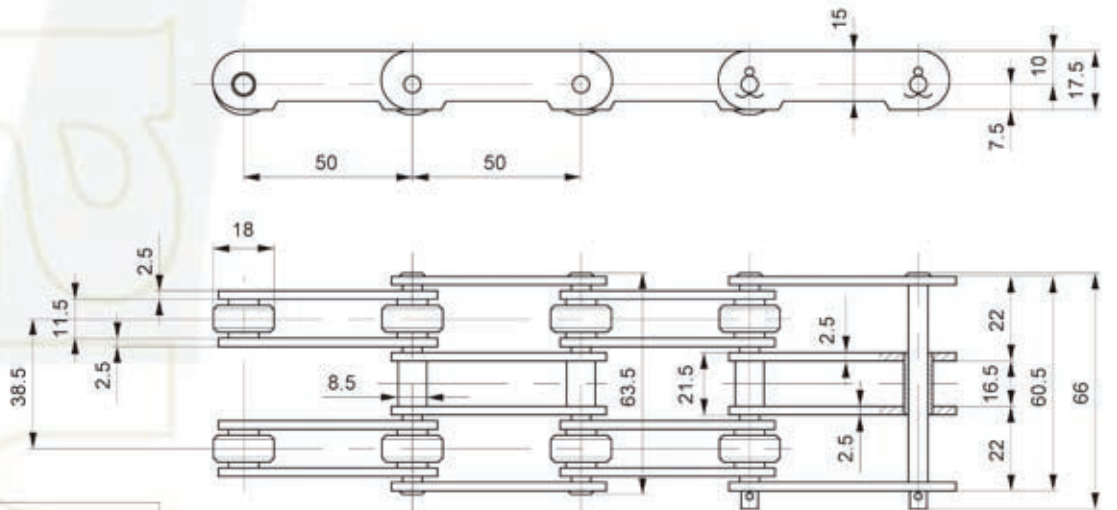
S
U
S
N
E

CHAINS FOR SPECIAL APPLICATIONS – FOOD INDUSTRY

ELECTRONIC GRADING MACHINE



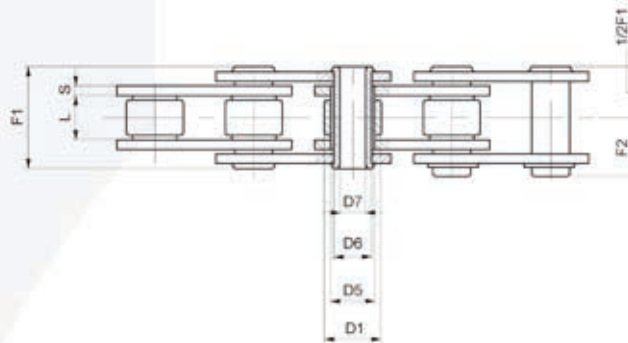
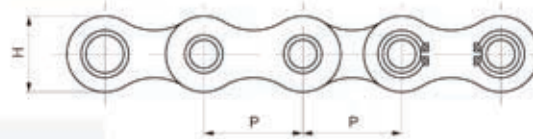
| Chain N. | P mm | L mm | D1 mm | D5 mm | D6 mm | D8 mm | H mm | S mm | F1 mm | F2 mm | Breaking load N | Chain weight kg/m |
|-------------|-------|------|-------|-------|-------|-------|------|------|-------|-------|-----------------|-------------------|
| ◆ C2060HFPT | 38,1 | 12,7 | 11,91 | 8,4 | 6 | 8,2 | 18 | 3 | 29,2 | 18 | 38.000 | 1,6 |
| ◆ W3609... | 44,45 | 12,7 | 11,91 | 8,4 | 6 | 8,1 | 18 | 3 | 29,2 | 18 | 38.000 | 1,4 |
| ◆ W4376... | 50 | 11,7 | 12,07 | 8,3 | 6 | 8,1 | 17 | 2,5 | 27 | 16 | 20.000 | 1,2 |



TRIPLE chain P. 50x11,5x18or ZINC PLATED

Breaking load: 32.000 N

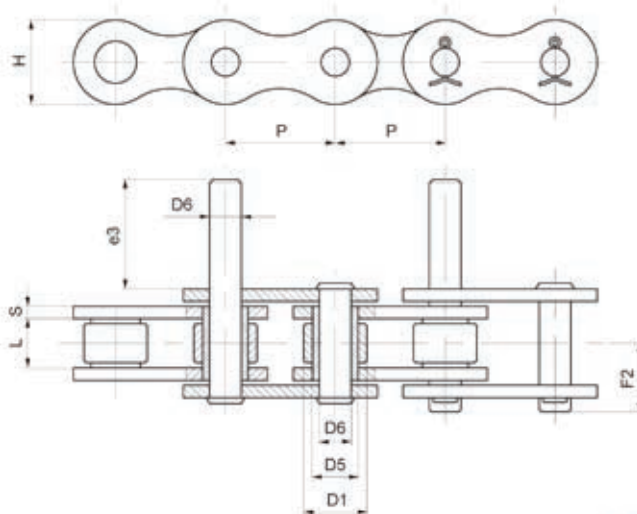
CHAINS FOR SPECIAL APPLICATIONS – FOOD INDUSTRY



Layout of attachments
on page 1.9/2

HOLLOW PIN CHAINS

| Chain N. | P mm | L mm | D1 mm | D5 mm | D6 mm | D7 mm | H mm | S mm | F1 mm | F2 mm | Breaking load N | Chain weight kg/m |
|----------|------|------|-------|-------|-------|-------|------|------|-------|-------|-----------------|-------------------|
| ◆ 3520Z | 35 | 16 | 20 | 17 | 14 | 10,4 | 26 | 2,5 | 31 | 16,7 | 25.000 | 2,2 |
| 3520R | 35 | 16 | 20 | 17 | 14 | 10,4 | 26 | 2,5 | 31 | 16,7 | 40.000 | 2,2 |
| ◆ 4020Z | 40 | 16 | 20 | 17 | 14 | 10,4 | 30 | 2,5 | 31 | 16,7 | 25.000 | 2,3 |



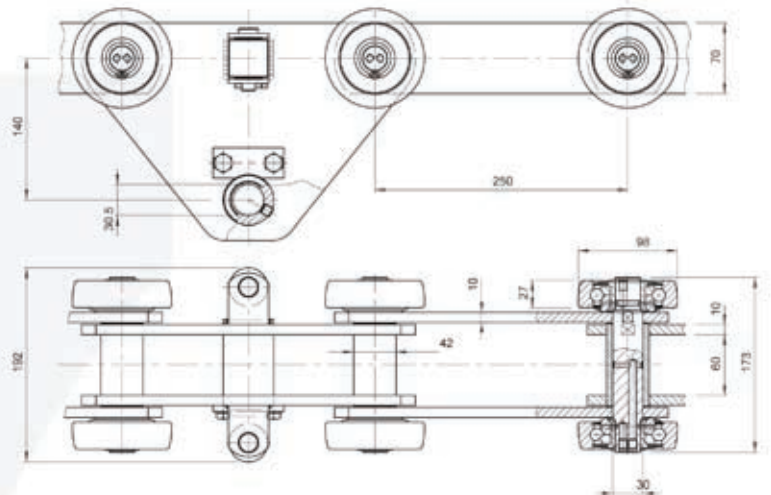
WITH EXTENDED PINS

| Chain N. | P mm | L mm | D1 mm | D5 mm | D6 mm | H mm | S mm | F2 mm | F6 mm | e3 mm | Breaking load N | Chain weight kg/m |
|------------|------|------|-------|-------|-------|------|------|-------|-------|-------|-----------------|-------------------|
| ◆ 3521Z | 35 | 16 | 20 | 13 | 10 | 26 | 2,5 | 50,5 | 67,5 | 35 | 35.000 | 2,8 |
| ▲ W3033... | 38,1 | 13 | 12 | 8,5 | 10 | 18 | 3 | 17,5 | 80,0 | 35 | 38.000 | 2,2 |
| ▲ W3109... | 38,1 | 13 | 22,5 | 8,5 | 10 | 18 | 3 | 17,5 | 80,0 | 35 | 38.000 | 2,3 |

- ◆ zinc plated execution
- ▲ zinc plated or nickel plated execution

CHAINS FOR SPECIAL APPLICATIONS – AUTOMOTIVE INDUSTRY

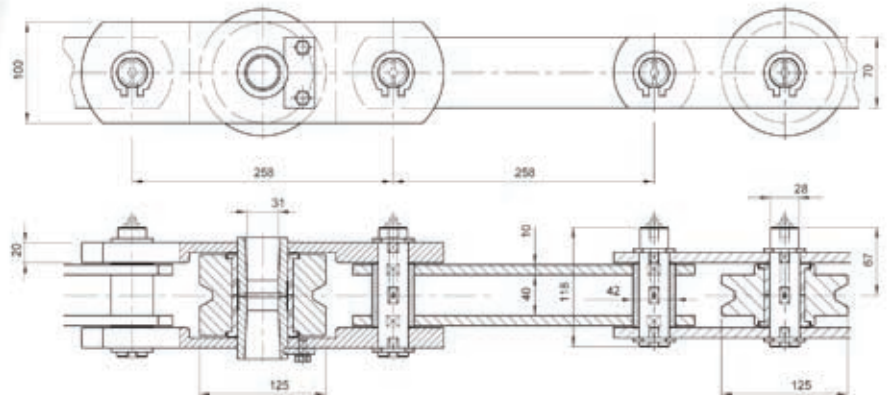
PENDULUM
CHAINS



Chain P. 250x60x42 øB

 Breaking load: 370.000 N

PENDULUM
CHAINS

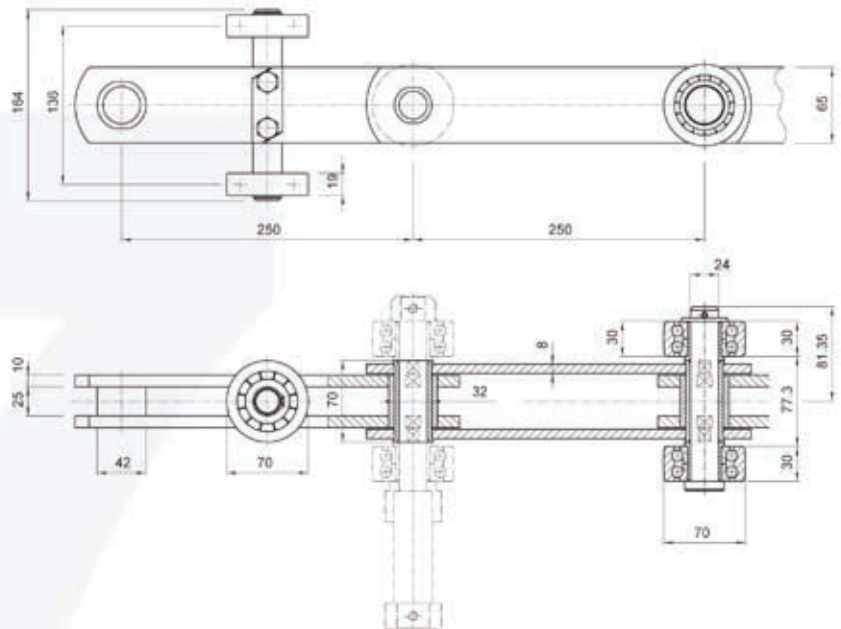


Chain P. 258x40x42 øB

 Breaking load: 405.000 N

CHAINS FOR SPECIAL APPLICATIONS – AUTOMOTIVE INDUSTRY

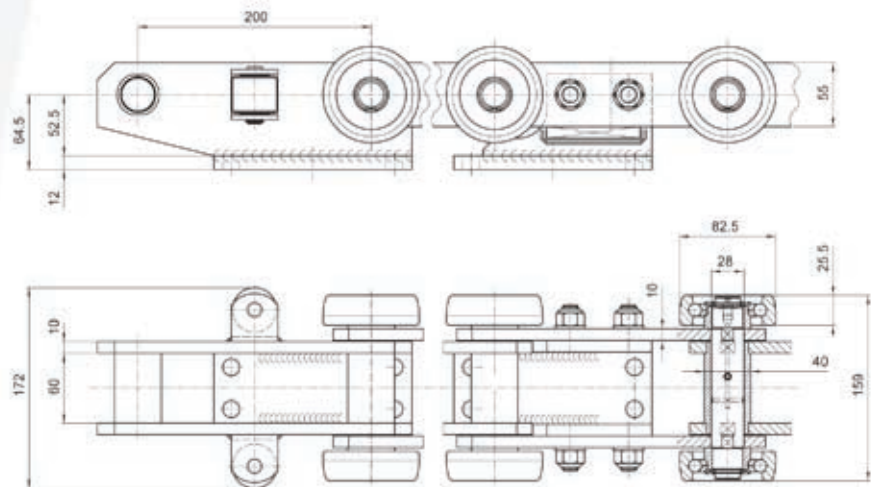
PENDULUM
CHAINS



Chain P. 250x25x42 e8

 Breaking load: 380.000 N

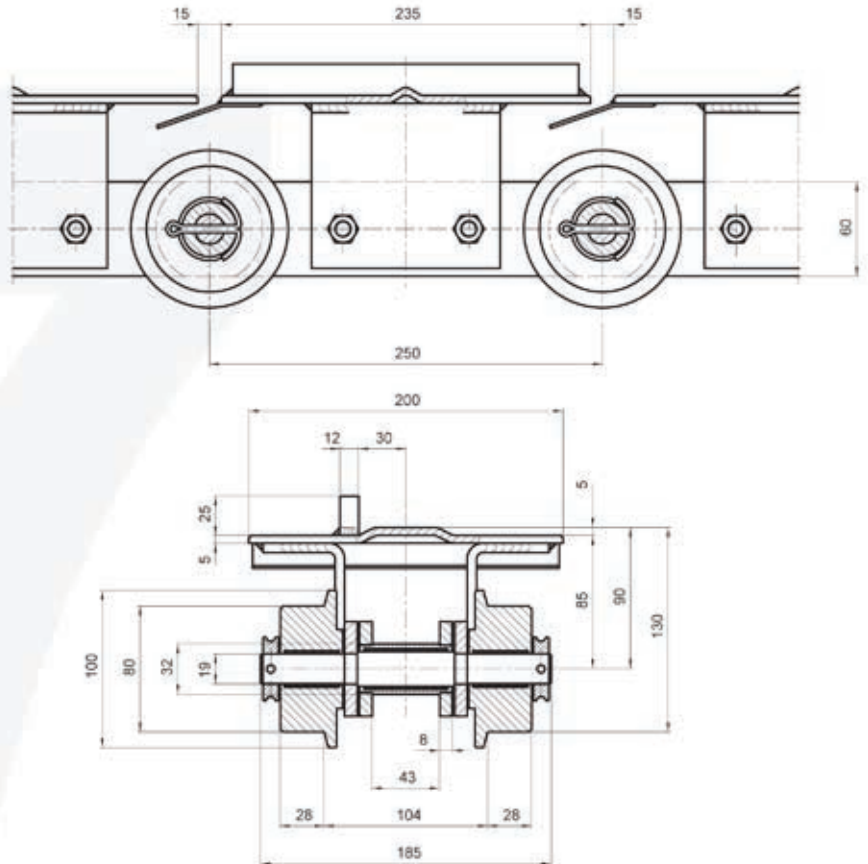
PENDULUM
CHAINS



Chain P. 200x50x40 e8

 Breaking load: 300.000 N

CHAINS FOR SPECIAL APPLICATIONS – AUTOMOTIVE INDUSTRY



DRYING
OVENS

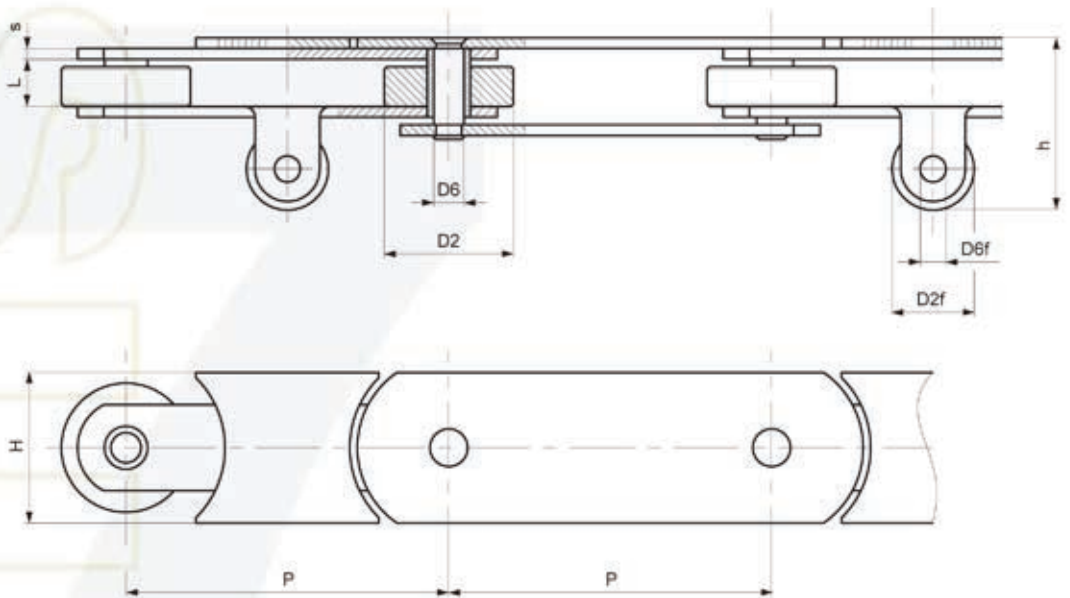
Chain P. 250x43x32 oB



Breaking load: 224.000 N

Lubrication and maintenance free
through MECASEC®
(registered trade mark by P.T.F.E. Sarl)

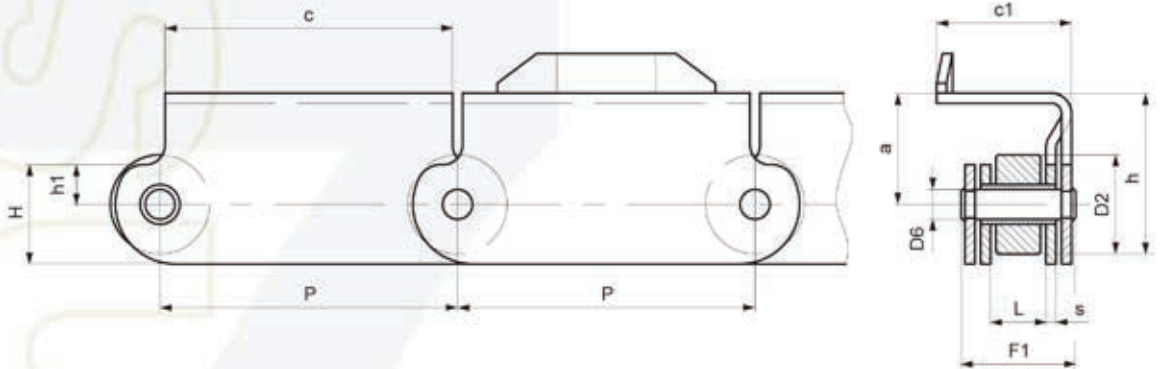
CHAINS FOR SPECIAL APPLICATIONS – AUTOMOTIVE INDUSTRY



SKID CONVEYORS

| Chain N. | P mm | L mm | D2 mm | D6 mm | H mm | S mm | D2f mm | D6f mm | h mm | Breaking load N |
|----------|------|------|-------|-------|------|------|--------|--------|------|-----------------|
| W4697 | 100 | 22 | 60 | 14 | 70 | 5 | 38 | 12 | 81 | 160.000 |
| W2527R | 150 | 22 | 60 | 14 | 70 | 5 | 38 | 12 | 81 | 160.000 |
| W2542R | 150 | 22 | 60 | 22 | 80 | 8 | 70 | 18 | 131 | 220.000 |
| W4028R | 150 | 22 | 60 | 14 | 100 | 5 | 38 | 12 | 81 | 160.000 |
| W2595R | 150 | 22 | 60 | 14 | 80 | 5 | 38 | 12 | 81 | 160.000 |

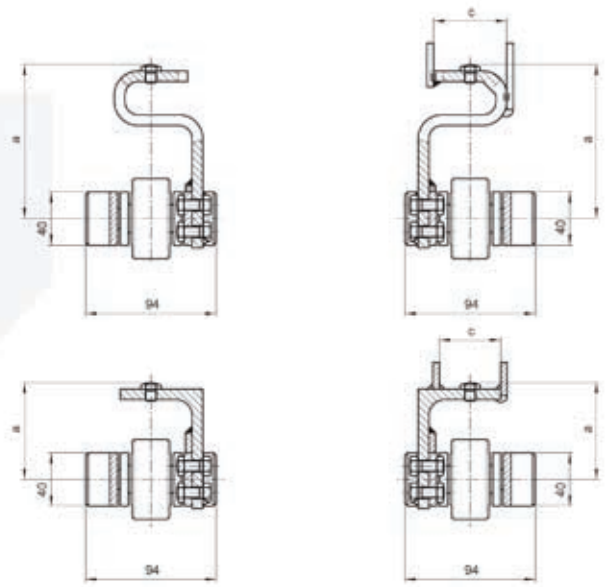
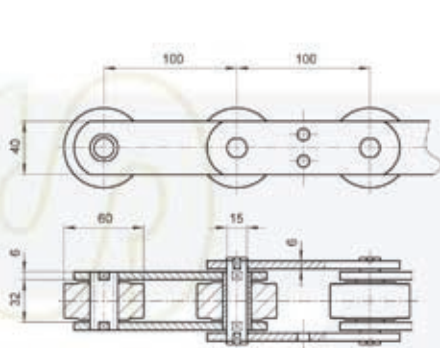
CHAINS FOR SPECIAL APPLICATIONS – AUTOMOTIVE INDUSTRY



SKID CONVEYORS

| Chain N. | P mm | L mm | D2 mm | D6 mm | H mm | h mm | h1 mm | S mm | F1 mm | a mm | c mm | c1 mm | Breaking load N |
|----------|------|------|-------|-------|------|------|-------|------|-------|------|------|-------|-----------------|
| W2359 | 150 | 28 | 50 | 15 | 50 | 81 | 20 | 5 | 55 | 56 | 145 | 68 | 160.000 |
| W3057 | 150 | 28 | 50 | 15 | 50 | 85 | 20 | 5 | 55 | 60 | 145 | 65 | 160.000 |
| W3349 | 150 | 32 | 50 | 14 | 55 | 81 | 20 | 5 | 58,5 | 56 | 145 | 80 | 160.000 |
| W2387 | 150 | 32 | 50 | 14 | 55 | 81 | 20 | 6 | 63 | 56 | 145 | 80 | 160.000 |

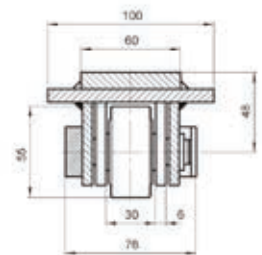
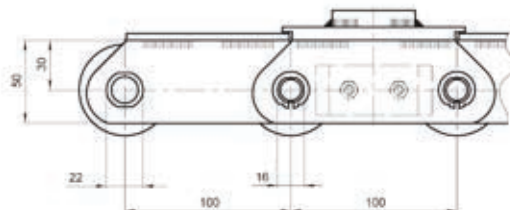
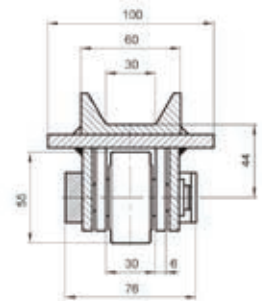
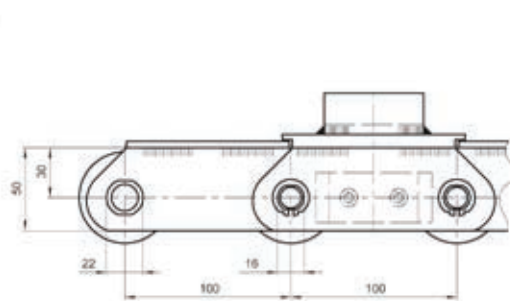
CHAINS FOR SPECIAL APPLICATIONS – AUTOMOTIVE INDUSTRY



SKID
CONVEYORS

Chain P. 100x32x60 eR

 Breaking load: 112.000 N



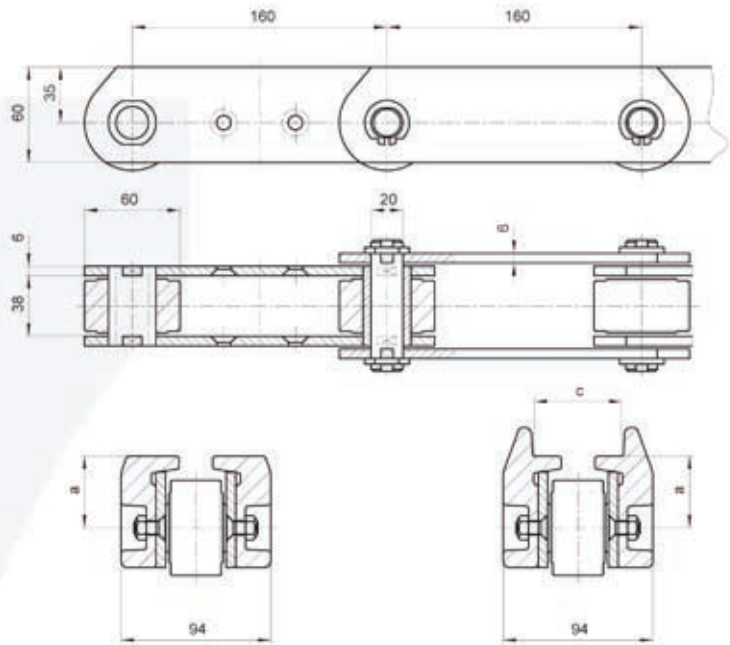
SKID
CONVEYORS

Chain P. 100x30x55 eR

 Breaking load: 120.000 N

CHAINS FOR SPECIAL APPLICATIONS – AUTOMOTIVE INDUSTRY

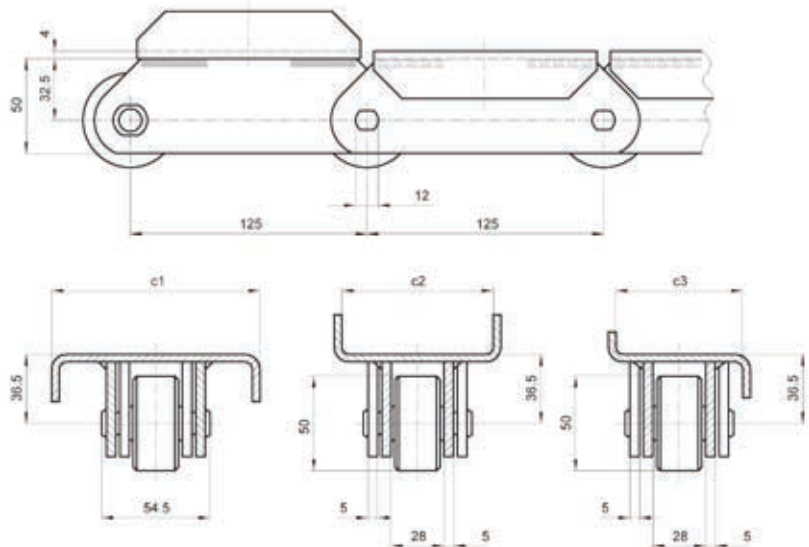
SKID
CONVEYORS



Chain P. 160x38x60 oR

 Breaking load: 200.000 N

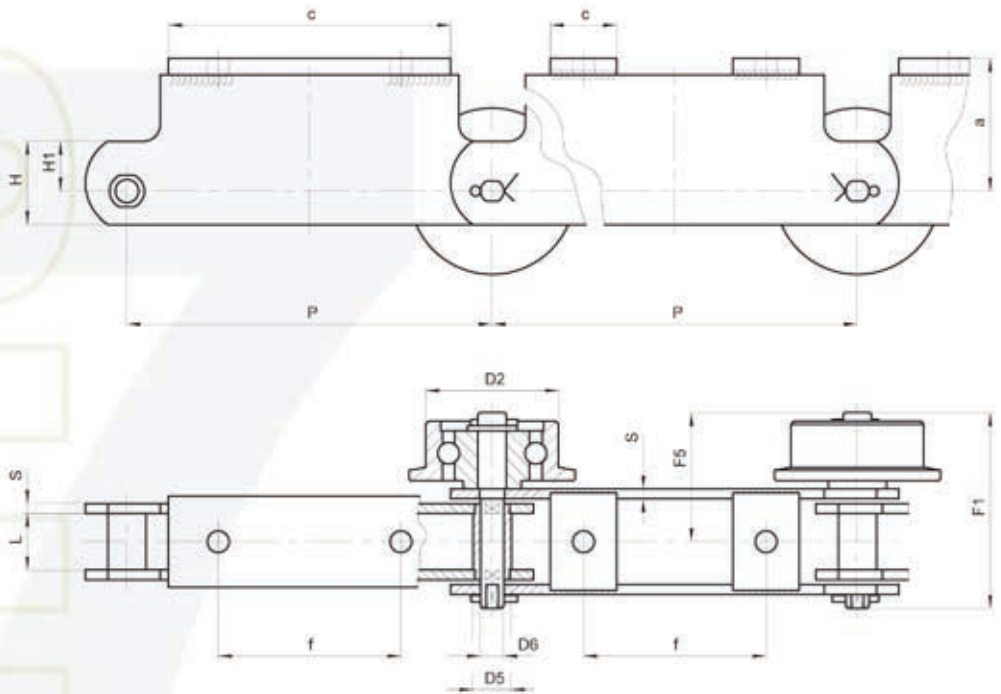
SKID
CONVEYORS



Chain P. 125x28x50 oR

 Breaking load: 80.000 N

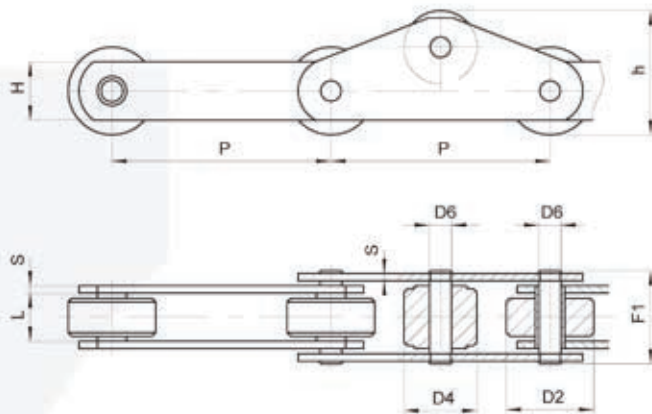
CHAINS FOR SPECIAL APPLICATIONS – AUTOMOTIVE INDUSTRY




CAR CONVEYING

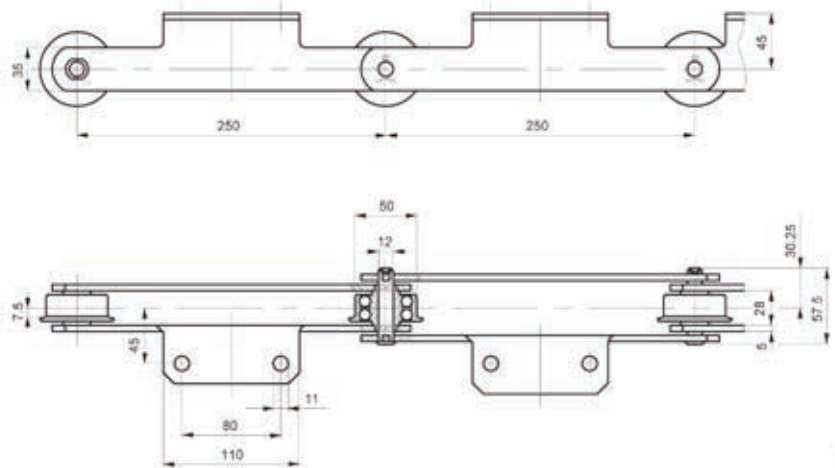
| Chain N. | P mm | L mm | D2 mm | D5 mm | D6 mm | H mm | H1 mm | S mm | F1 mm | F5 mm | a mm | c mm | f mm | Breaking load N |
|----------|------|------|-------|-------|-------|------|-------|------|-------|-------|------|------|------|-----------------|
| W3810 | 220 | 34 | 80 | 23 | 14 | 50 | 31 | 6 | 114,5 | 76 | 80 | 170 | 110 | 140.000 |
| W4031L | 220 | 34 | 80 | 30 | 20 | 90 | 60 | 6 | 115 | 76 | 72 | 40 | 154 | 224.000 |
| W4986LR | 220 | 34 | 80 | 30 | 20 | 60 | 25 | 6 | 130,5 | 91,5 | 65 | 50 | 170 | 224.000 |
| W4779 | 250 | 32 | 80 | 21 | 15 | 60 | 40 | 6 | 110,5 | 73,5 | 48 | 50 | 140 | 112.000 |
| W4952 | 250 | 32 | 100 | 34 | 25 | 100 | 60 | 6 | 122,5 | 81,5 | 70 | 50 | 130 | 240.000 |
| W4999 | 250 | 34 | / | 30 | 20 | 80 | 48 | 6 | 116 | 77 | 58 | 50 | 185 | 260.000 |
| W5022 | 250 | 34 | 80 | 30 | 20 | 90 | 60 | 6 | 115 | 76 | 72 | 40 | 184 | 170.000 |

CHAINS FOR SPECIAL APPLICATIONS – AUTOMOTIVE INDUSTRY



SKIDS
CONVEYORS

| Chain N. | P mm | L mm | D2 mm | D4 mm | D6 mm | H mm | S mm | F1 mm | h mm |  Breaking load N | Notes |
|----------|------|------|-------|-------|-------|------|------|-------|------|---|---------------------|
| W2165 | 50 | 25 | 20 | 24 | 10 | 25 | 4 | 45 | 32 | 56.000 | RP every outer link |
| W2165A | 50 | 25 | 20 | 24 | 10 | / | 4 | 45 | 32 | 56.000 | RP every link |
| W3836A | 125 | 28 | 25 | 42 | 12 | 35 | 5 | 54,5 | 53,5 | 80.000 | RP every outer link |
| W1669 | 150 | 28 | 60 | 50 | 15 | 40 | 5 | 54,5 | 85 | 160.000 | RP every outer link |
| W5165 | 200 | 50 | 60 | 60 | 18 | 50 | 7 | 85 | 65 | 160.000 | RP every link |



WATER TEST

Chain P. 250x28x50/60 aR

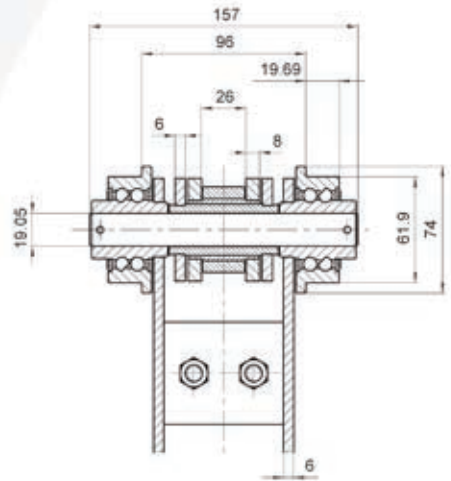
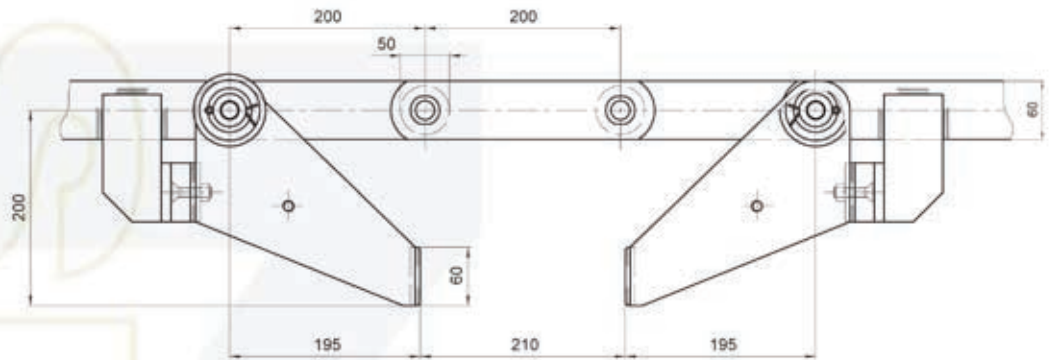
Material:
STAINLESS steel

Sealed roller bearing



Breaking load: 80.000 N

CHAINS FOR SPECIAL APPLICATIONS – AUTOMOTIVE INDUSTRY

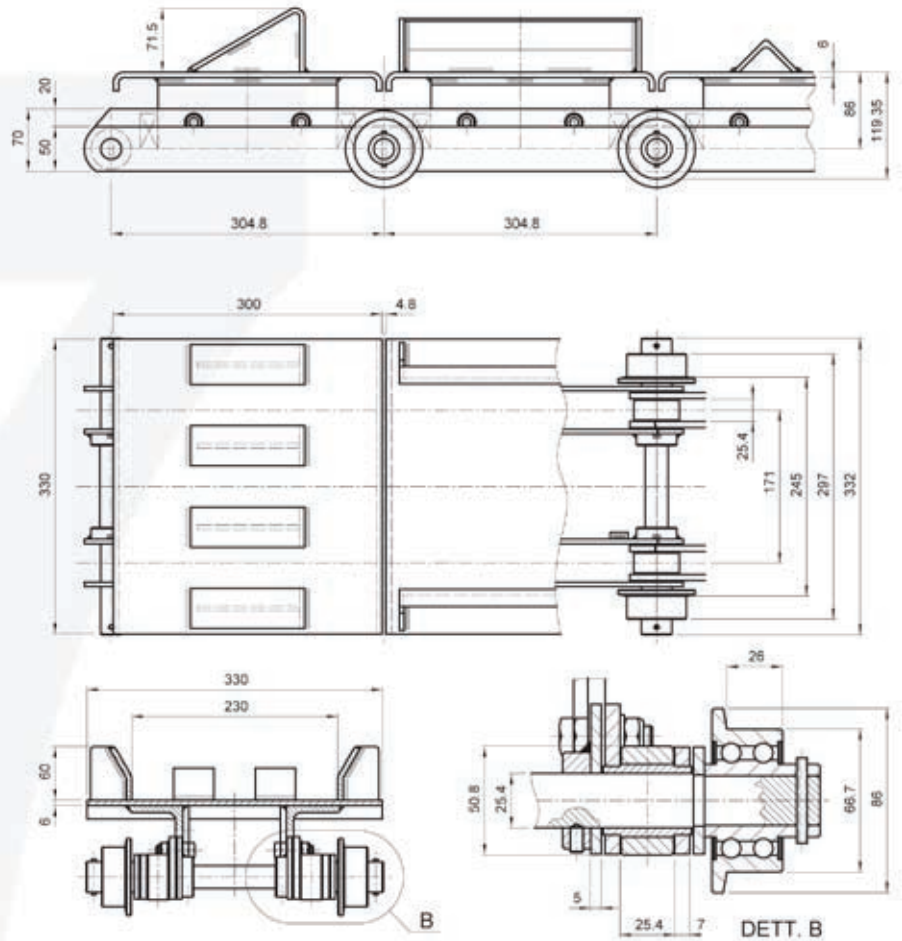


CROSS
TRANSFER
UNITS

Chain P. 200x26x60 oR

 Breaking load: 300.000 N

CHAINS FOR SPECIAL APPLICATIONS – AUTOMOTIVE INDUSTRY



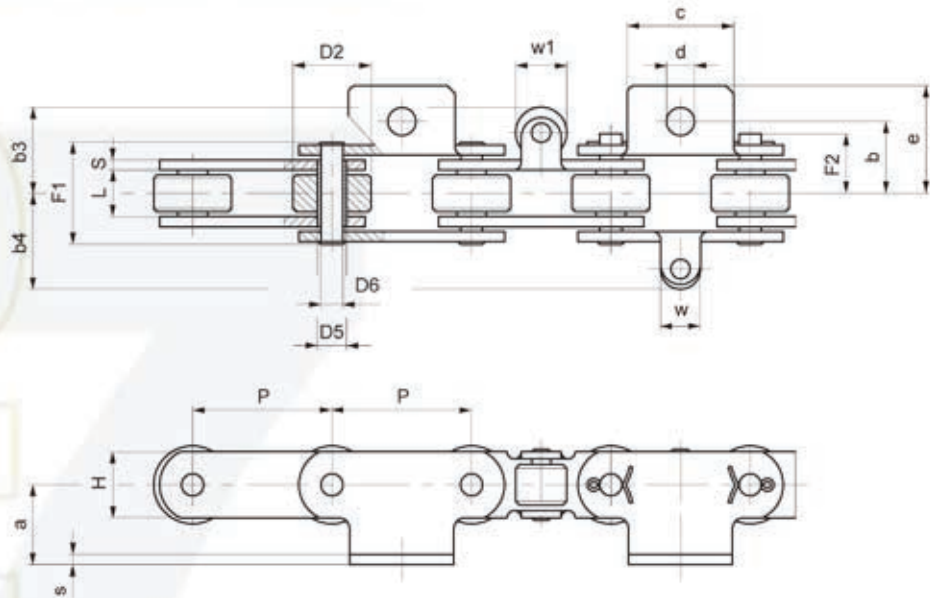
WATER TEST

Chain P. 304.8x25.4x50.8 oR

Material: treated and zinc plated steels

 Breaking load: 300.000 N

CHAINS FOR SPECIAL APPLICATIONS – SHOE INDUSTRY



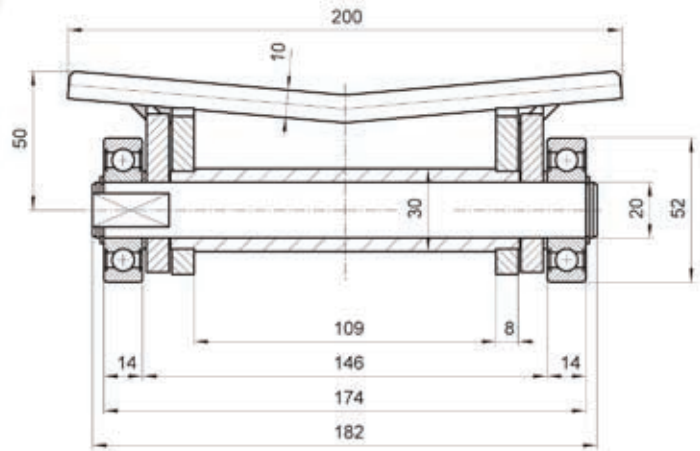
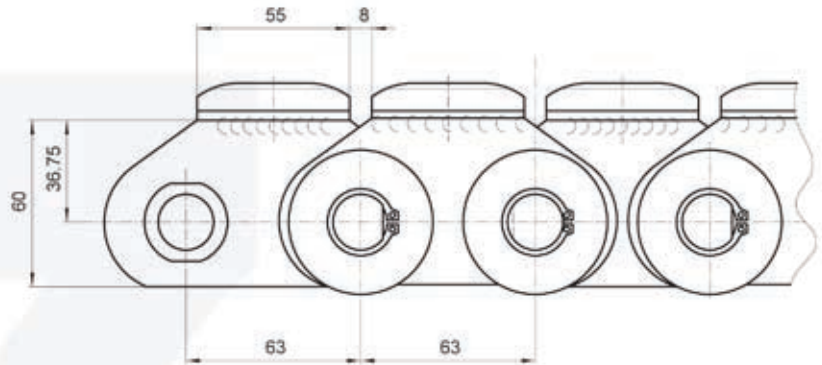
SHOE HANDLING

| Chain N. | P mm | L mm | D2 mm | D5 mm | D6 mm | H mm | S/s mm | F1 mm | F2 mm | Breaking load N | Chain weight kg/m |
|----------|------|------|-------|-------|-------|------|--------|-------|-------|-----------------|-------------------|
| 10337 | 50 | 11,5 | 25 | 8,4 | 5,7 | 15 | 2 | 23,8 | 14,6 | 16.000 | 1,4 |
| 10381 | 50 | 11,5 | 25 | 8,4 | 5,7 | 15 | 2 | 23,8 | 14,6 | 16.000 | 1,4 |
| 103391 | 50 | 11,5 | 25 | 8,4 | 5,7 | 15 | 2 | 23,8 | 14,6 | 16.000 | 1,5 |
| 103476 | 50 | 11,5 | 25 | 8,4 | 5,7 | 15 | 2 | 23,8 | 14,6 | 16.000 | 1,4 |
| W1364A | 50 | 11,5 | 25 | 8,4 | 5,7 | 14 | 2,5 | 24,9 | 15,7 | 18.000 | 1,7 |
| W2518 | 50 | 11,5 | 25 | 8,4 | 5,7 | 15 | 2 | 23,8 | 14,6 | 16.000 | 1,4 |

ATTACHMENTS

| Chain N. | P mm | a mm | b mm | c mm | d mm | e mm | w mm | w1 mm | b3 mm | b4 mm | Notes |
|----------|------|------|------|------|------|------|------|-------|-------|-------|---------------------|
| 10337 | 50 | 25 | 21 | 41 | 6,5 | 32 | 12 | / | / | 24 | |
| 10381 | 50 | 24 | / | 24,5 | / | 31,2 | 12 | / | / | 24 | |
| 103391 | 50 | 25 | 21 | 41 | 6,5 | 32 | 12 | 14 | 22,5 | 24 | |
| 103476 | 50 | 25 | 21 | 41 | 6,5 | 32 | / | 14 | 22,5 | / | |
| W1364A | 50 | / | / | 41,5 | 6,5 | 23,3 | / | 14 | 28,8 | / | Vertical attachment |
| W2518 | 50 | 24,5 | / | 40 | / | 57,5 | / | 14 | 22,5 | / | |

CHAINS FOR SPECIAL APPLICATIONS – PAPER INDUSTRY



ROLL HANDLING SYSTEM

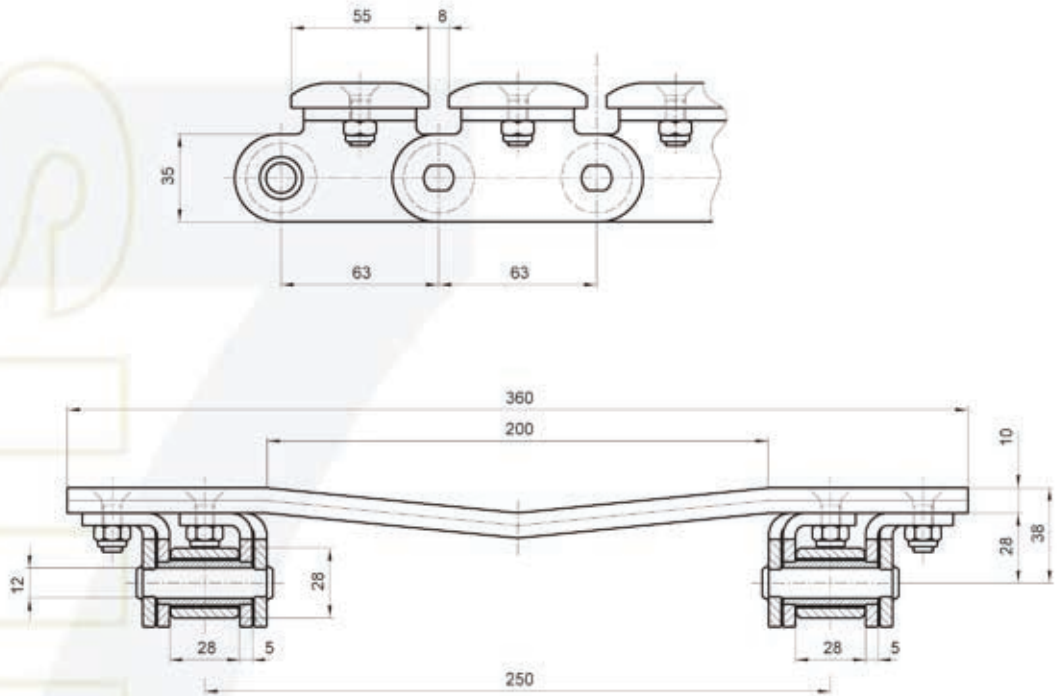
Chain P. 63x109x30 oB



Breaking load: 210.000 N

Outboard ball bearings, both sides

CHAINS FOR SPECIAL APPLICATIONS – PAPER INDUSTRY



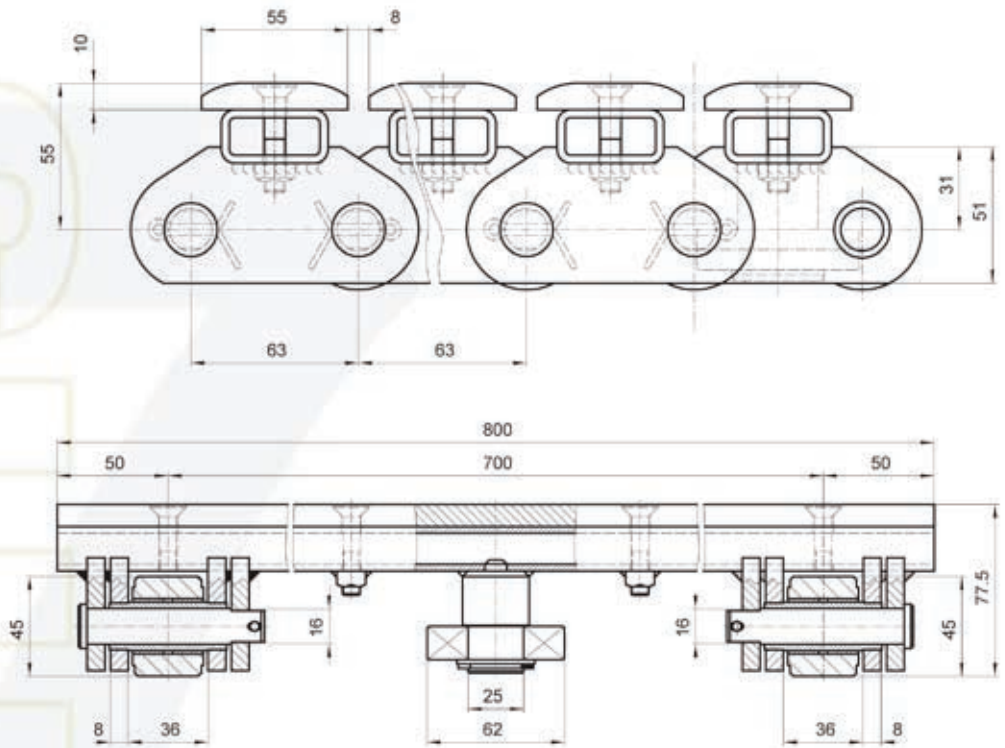
ROLL HANDLING SYSTEM

Chain P. 63x28x28 oR



Breaking load: 80.000 N (each chain)

CHAINS FOR SPECIAL APPLICATIONS – PAPER INDUSTRY



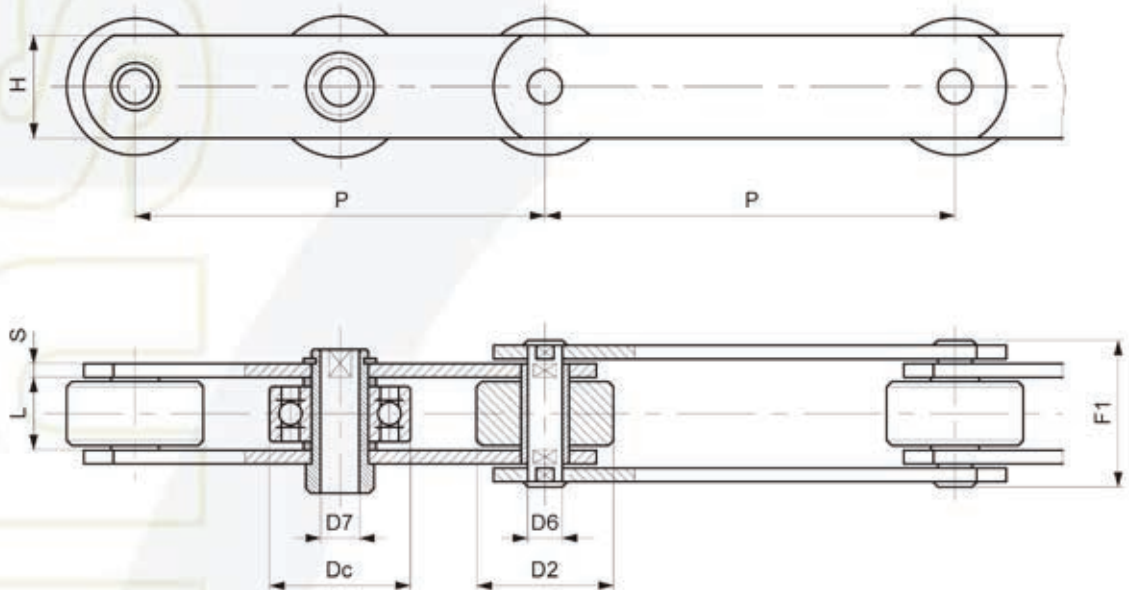
ROLL HANDLING SYSTEM

Chain P. 63x36x45 oR




Breaking load: 120.000 N (each chain)

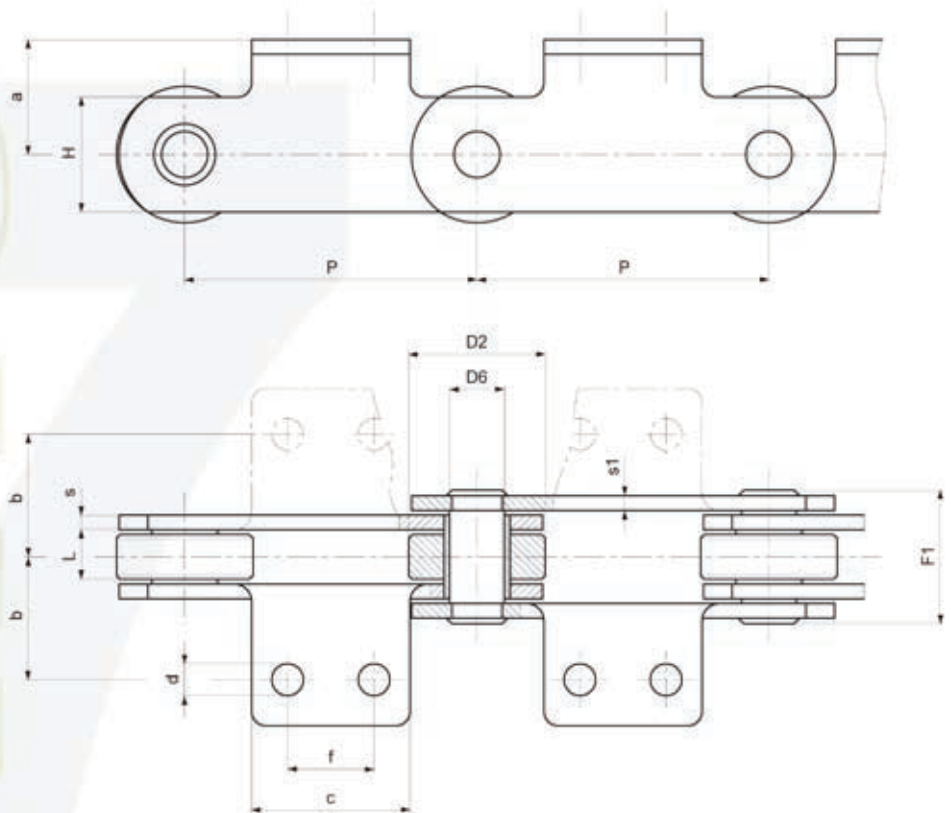
CHAINS FOR SPECIAL APPLICATIONS – PROVER INDUSTRY



SWINGING TRAYS CONVEYORS

| Chain N. | P mm | L mm | D2 mm | D6 mm | D7 mm | Dc mm | H mm | S mm | F1 mm |  Breaking load N | Notes |
|----------|-------|------|-------|-------|-------|-------|-------|------|-------|---|---------------------|
| W3248 | 80 | 28 | 52 | 18 | 12 | 52 | 35/40 | 5 | 55 | 80.000 | Ball bearing roller |
| W3513 | 80 | 28 | 52 | 18 | 12 | 52 | 35/40 | 5 | 55 | 80.000 | Ball bearing roller |
| W4976 | 140 | 32 | 30 | 21 | 15 | 47 | 40 | 6 | 63 | 170.000 | |
| W4949 | 152.4 | 26 | 60 | 33 | 27 | 62 | 50 | 7/5 | 58 | 200.000 | |
| W3729 | 160 | 32 | 60 | 21 | 15 | 62 | 40/45 | 6 | 63 | 140.000 | |
| W4751 | 160 | 35 | 36 | 25 | 17 | 62 | 45 | 6 | 65 | 180.000 | |
| W3247 | 180 | 32 | 60 | 21 | 15 | 62 | 40/45 | 6 | 63 | 112.000 | |
| W2498 | 180 | 36 | 70 | 30 | 20 | 72 | 60 | 8 | 77 | 300.000 | |
| W3064 | 180 | 43 | 70 | 30 | 21 | 72 | 60 | 8 | 84 | 300.000 | |
| W4937 | 200 | 26 | 60 | 33 | 27 | 62 | 50 | 7/5 | 58 | 200.000 | |
| W2340 | 200 | 36 | 70 | 30 | 20 | 72 | 60 | 8 | 77 | 300.000 | |

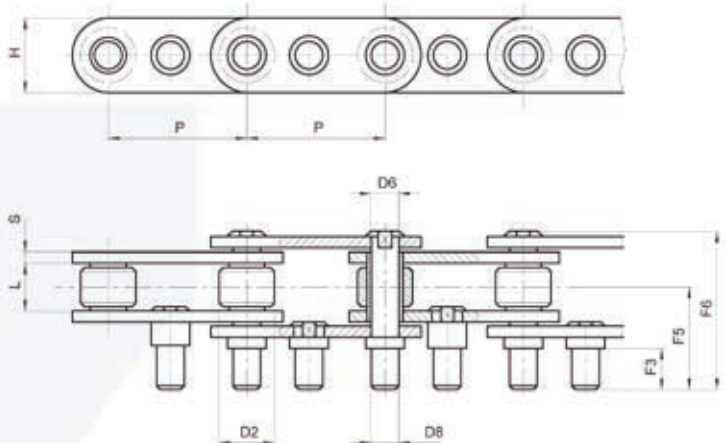
CHAINS FOR SPECIAL APPLICATIONS – CANNING INDUSTRY



SOLID PIN CHAINS

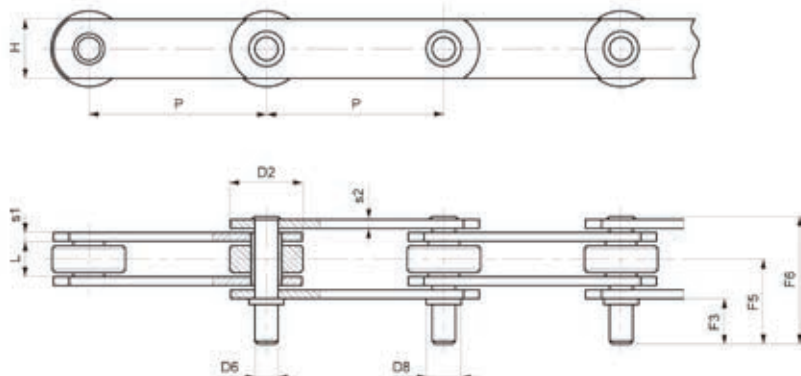
| Chain N. | P mm | L mm | D2 mm | D6 mm | H mm | S/S1 mm | a mm | b mm | c mm | F1 mm | Breaking load N |
|-----------|-------|------|-------|-------|------|---------|------|------|------|-------|-----------------|
| W2689 | 50 | 15 | 31 | 10 | 25 | 4/4 | 17,5 | 34 | 60 | 36 | 65.000 |
| 500BRA102 | 50 | 15 | 31 | 10 | 25 | 4/4 | 17,5 | 34 | 60 | 36 | 65.000 |
| W4216 | 76,2 | 15 | 31,75 | 14 | 26,5 | 4/4 | 19 | 38,1 | 43 | 37 | 34.000 |
| W1829 | 86 | 14,5 | 45 | 14 | 35 | 4/4 | 7,5 | 37 | 35 | 36,5 | 74.000 |
| W1826 | 100 | 15 | 45 | 10 | 25 | 4/4 | 15 | 47,5 | 70 | 36 | 45.000 |
| W4338 | 100 | 22 | 45 | 12 | 35 | 4/4 | 33,5 | 40 | 70 | 43 | 100.000 |
| W3776 | 101,6 | 19 | 47,5 | 19 | 40 | 5/4 | 38 | 44,5 | 63,5 | 44,8 | 100.000 |
| W3952 | 101,6 | 19 | 47,5 | 19 | 40 | 5/4 | 30 | 44,5 | 63,5 | 44,8 | 100.000 |
| W2554/5 | 101,6 | 19 | 47,5 | 19 | 40 | 5/4 | 40 | 41 | 63,5 | 44,8 | 100.000 |

CHAINS FOR SPECIAL APPLICATIONS – CANNING INDUSTRY



PEEL SEPARATORS

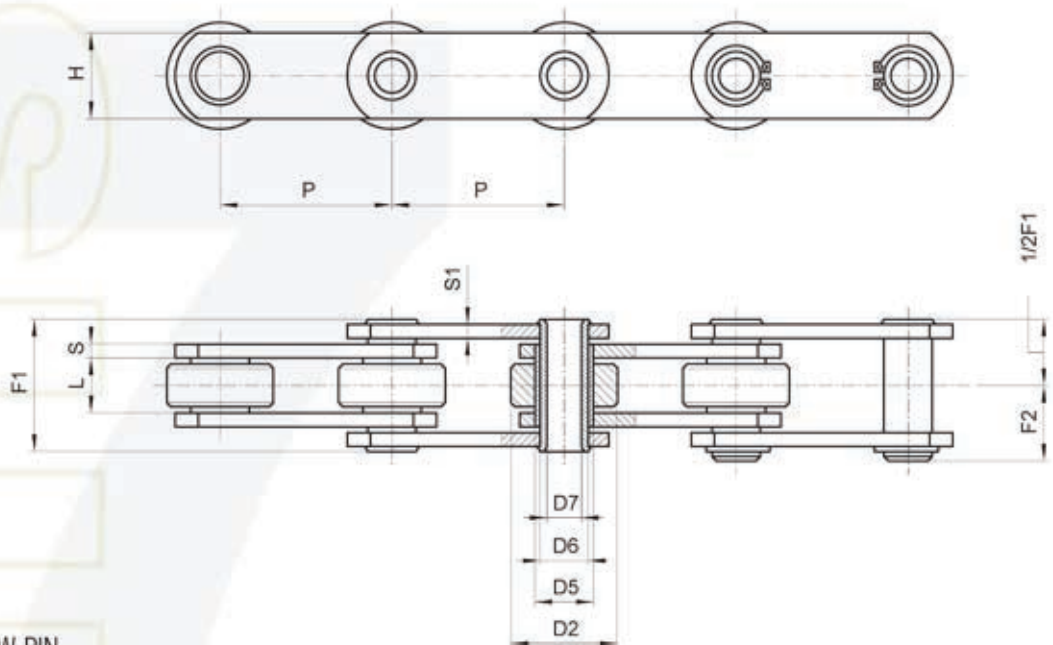
| Chain N. | P mm | L mm | D2 mm | D6 mm | D8 mm | H mm | S mm | F3 mm | F5 mm | F6 mm | Breaking load N |
|----------|------|------|-------|-------|-------|------|------|-------|-------|-------|-----------------|
| W1173 | 50 | 15 | 20 | 9,85 | 10 | 27 | 4 | 15 | 32,5 | 53,5 | 75.000 |
| W2938 | 50 | 15 | 20 | 9,85 | 10 | 25 | 4 | 15 | 32,5 | 57 | 70.000 |
| W1440 | 53 | 16 | 27 | 8 | 8 | 20 | 3 | 17 | 32,5 | 53,5 | 24.000 |
| W1527 | 53 | 16 | 25 | 8 | 8 | 20 | 3 | 15 | 32,5 | 53,5 | 50.000 |



WITH EXTENDED PINS

| Chain N. | P mm | L mm | D2 mm | D6 mm | D8 mm | H mm | S1/S2 mm | F3 mm | F5 mm | F6 mm | Breaking load N |
|----------|-------|------|-------|-------|-------|------|----------|-------|-------|-------|-----------------|
| 500D202 | 50 | 15 | 31 | 12 | 16 | 25 | 4/4 | 32 | 48 | 66 | 45.000 |
| W1201 | 75 | 15 | 31 | 9,85 | 9,85 | 25 | 4/4 | 20 | 36 | 54 | 75.000 |
| W1200 | 80 | 15 | 31 | 9,85 | 9,85 | 25 | 4/4 | 20 | 36 | 54 | 75.000 |
| W2026 | 88,9 | 15 | 31,75 | 9,85 | 9,85 | 25 | 4/4 | 20 | 36 | 53,5 | 45.000 |
| W1746 | 88,9 | 19 | 47,5 | 19,1 | / | 40 | 5/4 | 25 | 44,2 | 65,5 | 100.000 |
| W2832 | 100 | 15 | 32 | 9,85 | 15 | 25 | 4/4 | 20 | 36 | 53,5 | 45.000 |
| W1137 | 101,6 | 15 | 38 | 12 | 16 | 25 | 4/4 | 25 | 53,5 | 72 | 40.000 |

CHAINS FOR SPECIAL APPLICATIONS – CANNING INDUSTRY

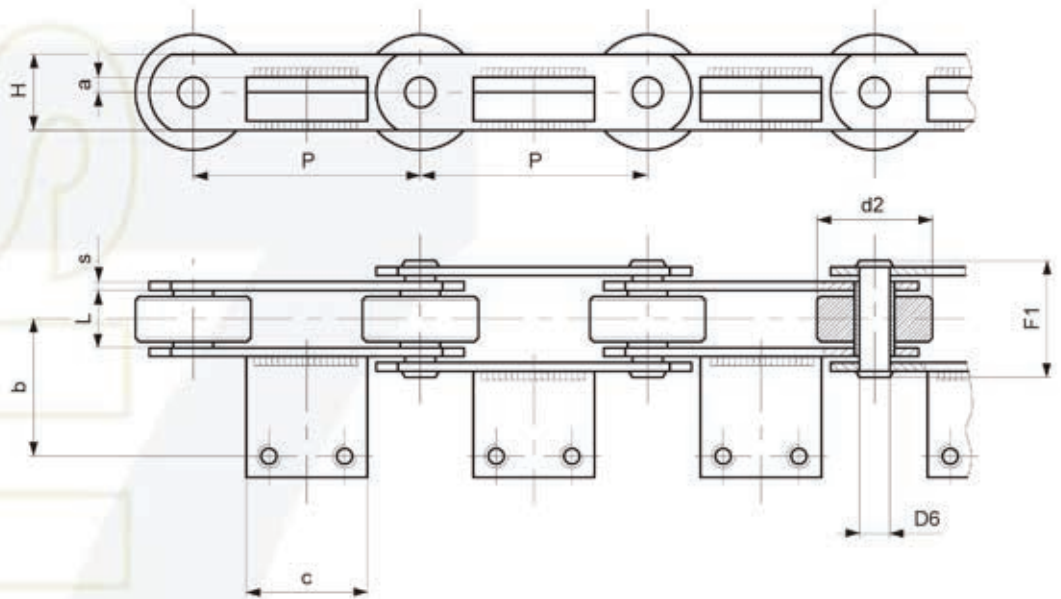


HOLLOW PIN CHAINS


| Chain N. | P mm | L mm | D2 mm | D5 mm | D6 mm | D7 mm | H mm | S/S1 mm | F1 mm | Breaking load N |
|------------|-------|------|-------|-------|-------|-------|------|---------|-------|-----------------|
| W2003 | 50 | 11,5 | 25 | 11 | 9 | 6,2 | 20 | 2,5/2,5 | 25 | 25.000 |
| W4886RZV** | 76,2 | 19 | 47,5 | 23 | 19 | 13,5 | 40 | 5/4 | 44,75 | 108.000 |
| W1830 | 86 | 14,5 | 45 | 25 | 20 | 14,4 | 35 | 4/3 | 34 | 50.000 |
| W2058 | 86 | 15 | 45 | 25 | 20 | 14,4 | 35 | 5/4 | 38,5 | 60.000 |
| W3149 | 101,6 | 19 | 47,5 | 23,5 | 19 | 13,25 | 40 | 5/4 | 43,5 | 125.000 |
| W2009 | 101,6 | 31 | 47,5 | 23 | 18 | 13,5 | 40 | 5/4 | 43 | 60.000 |
| W4890RZV** | 101,6 | 19 | 47,5 | 23 | 19 | 13,5 | 40 | 5/4 | 44,75 | 108.000 |
| W4894RZV** | 127 | 19 | 47,5 | 23 | 19 | 13,5 | 40 | 5/4 | 44,75 | 108.000 |
| W4769 | 127 | 19 | 47,5 | 23 | 19 | 13,5 | 40 | 5/4 | 44,75 | 69.000 |
| W4962SS* | 127 | 19 | 47,5 | 23 | 19 | 13,5 | 40 | 5/4 | 44,75 | 60.000 |

* STAINLESS steel chain
 ** green zinc plated execution

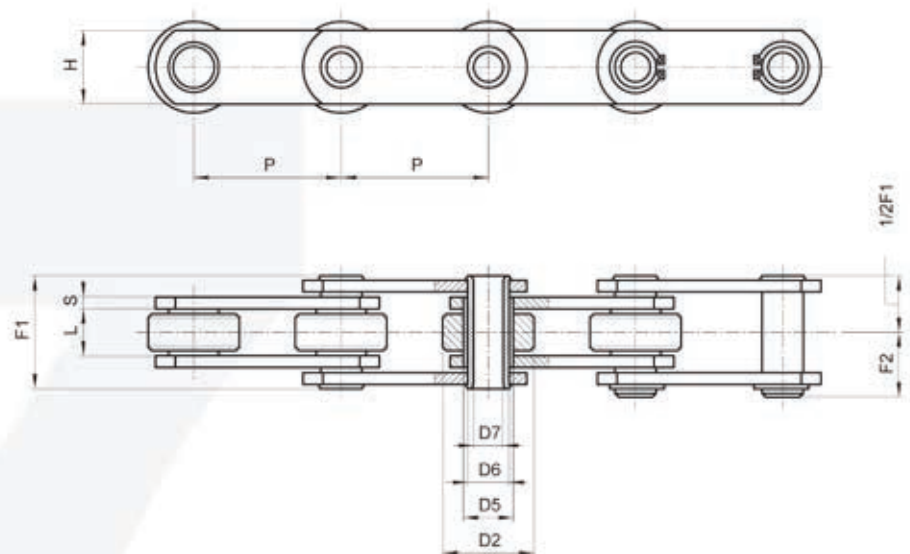
CHAINS FOR SPECIAL APPLICATIONS – FOOD OVENS



SOLID PIN CHAINS

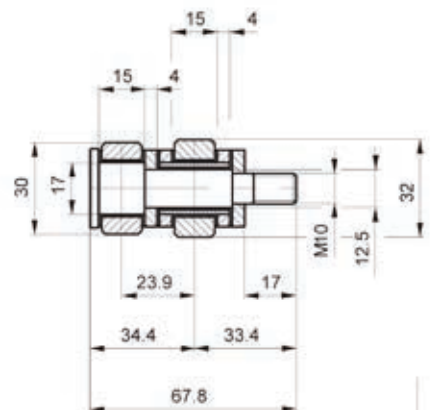
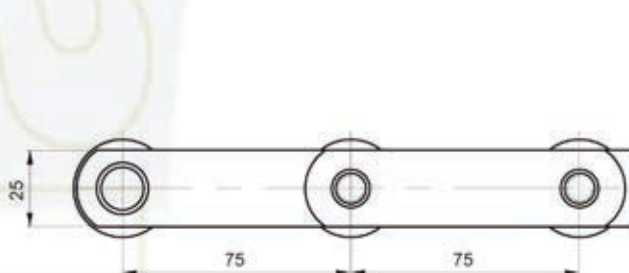
| Chain N. | P mm | L mm | D2 mm | D6 mm | H mm | S mm | F1 mm | a mm | b mm | c mm |  Breaking load N | Notes |
|----------|-------|------|-------|-------|------|------|-------|------|------|------|---|---------------------------|
| W1596 | 75 | 22 | 45 | 12 | 35 | 4 | 43 | 17,5 | 50 | 50 | 100.000 | Bent attachments |
| W2224 | 100 | 22 | 60 | 18 | 40 | 4 | 43,5 | 6 | 45 | 50 | 115.000 | |
| W3636 | 100 | 22 | 18 | 12 | 30 | 4 | 43,5 | / | / | / | 64.000 | Without attachments |
| W3030 | 100 | 25 | 60 | 14 | 50 | 5 | 57,5 | / | / | / | 150.000 | Without attachments |
| W4983 | 100 | 36 | 65 | 22 | 50 | 6 | 75 | 4 | 45 | 60 | 190.000 | |
| W2784 | 100 | 40 | 60 | 18 | 40 | 6 | 71 | 6 | 58 | 60 | 150.000 | |
| W5062 | 100 | 40 | 60 | 18 | 40 | 6 | 71 | 6 | 58 | 50 | 150.000 | |
| W4034 | 125 | 22 | 40 | 12 | 30 | 4 | 43,5 | 15 | 77 | 80 | 80.000 | |
| W4929R | 125 | 37 | 70 | 20 | 50 | 7 | 78 | 9 | / | 58 | 260.000 | Attachments without holes |
| W4543 | 355,6 | 49 | 60 | 16 | 40 | 6 | 80,5 | 1 | 63,5 | 283 | 140.000 | |

CHAINS FOR SPECIAL APPLICATIONS – FOOD OVENS



HOLLOW PIN CHAINS

| Chain N. | P mm | L mm | D2 mm | D5 mm | D6 mm | D7 mm | H mm | S mm | F1 mm | F2 mm | Breaking load N | Notes |
|----------|-------|------|-------|-------|-------|-------|------|------|-------|-------|-----------------|-------|
| W1368 | 50 | 11.5 | 31,75 | 17,12 | 10 | 9,7 | 25 | 3 | 28 | 17,1 | 40.000 | ** |
| 500CRP | 50 | 15 | 31 | 17 | 14 | 10,2 | 25 | 4 | 35 | 19,5 | 65.000 | |
| W3835 | 75 | 22 | 45 | 24 | 18 | 12,4 | 35 | 4 | 44 | 27,5 | 120.000 | *** |
| W2467 | 100 | 25 | 60 | 26 | 18 | 10,2 | 40 | 5 | 51 | 33 | 135.000 | |
| W4858 | 100 | 36 | 65 | 30,8 | 22 | 10,5 | 50 | 6 | 75 | / | 190.000 | |
| W4445 | 152,4 | 25,4 | 64 | 31,8 | 25 | 19,5 | 50 | 7/5 | 56 | 30 | 150.000 | |



BREAD BAKING

Chain P. 75x15x32 eR

Lubrication and maintenance
free through MECASEC®
(registered trade mark by P.T.F.E. Sarr)

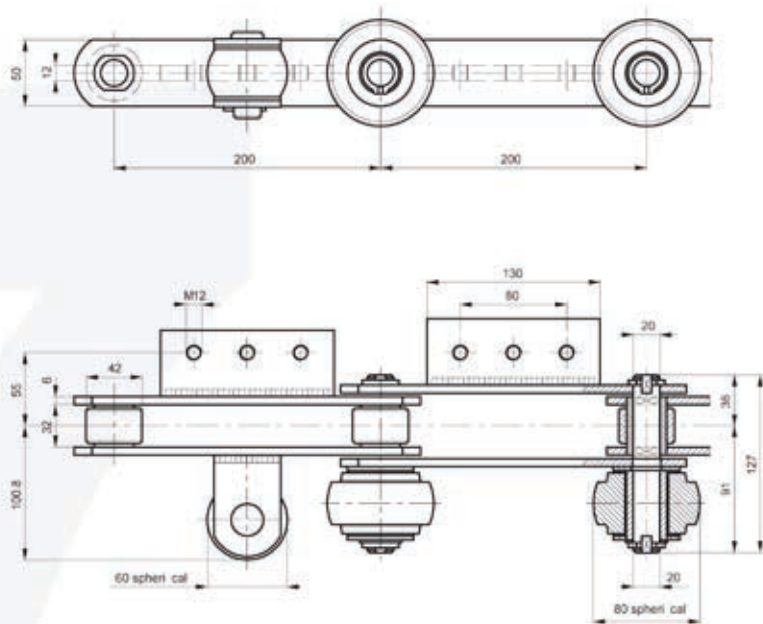
Working temperature: 250-300°C.

** Chain with solid pins and hollow pins every ...links

*** Hollow pins every 3 links

CHAINS FOR SPECIAL APPLICATIONS – FOOD OVENS

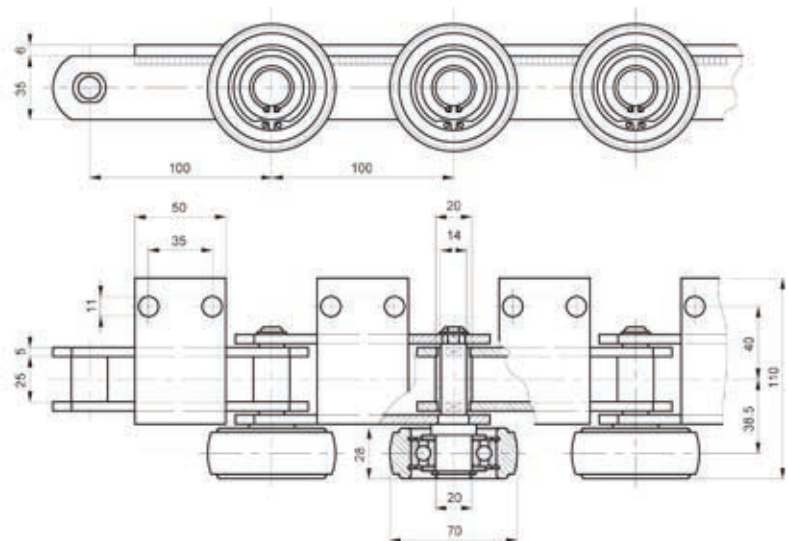
BREAD BAKING



Chain P. 200x32x42 eR

Working temperature: 250-300°C

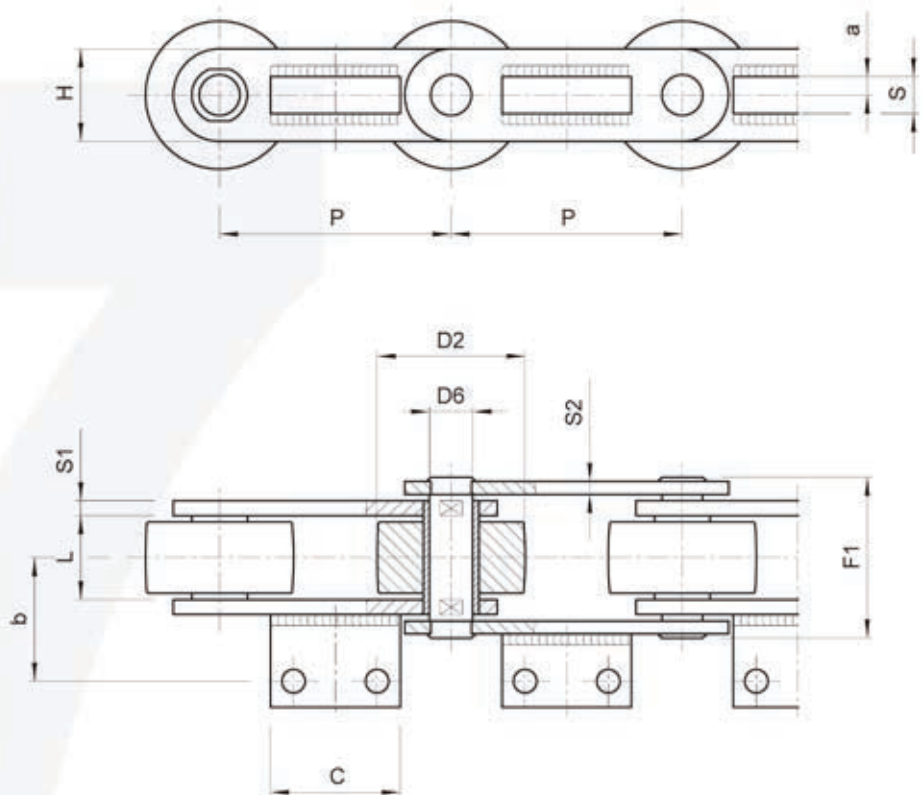
PIZZA OVENS



Chain P. 100x25x22 eRB

Working temperature: 350-400°C

CHAINS FOR SPECIAL APPLICATIONS – BOTTLE WASHING INDUSTRY

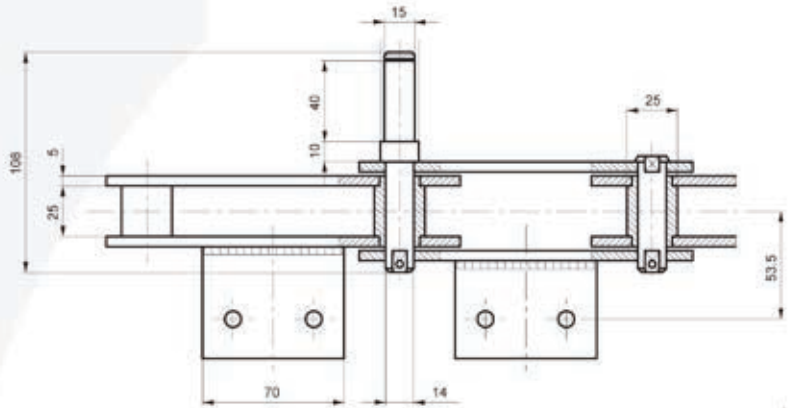
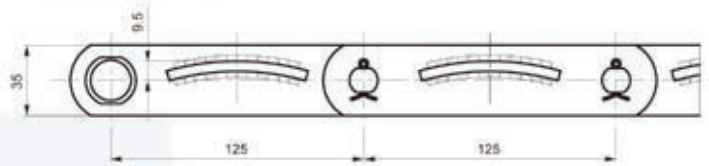


BOTTLE WASHING

| Chain N. | P mm | L mm | D2 mm | D6 mm | H mm | S1/S2 mm | F1 mm | a mm | b mm | c mm | s mm | Breaking load N | Attachment type |
|----------|-------|------|-------|-------|------|----------|-------|------|------|------|------|-----------------|-----------------|
| W4020CR* | 125 | 42 | 80 | 22 | 50 | 7/8 | 79 | 10 | 65 | 70 | 20 | 200.000 | A2-01 |
| W3820 | 135 | 25 | 75 | 22 | 50 | 5/7 | 54 | 25 | 47 | 75 | 5 | 156.000 | A2-01 |
| W4021CR* | 140 | 42 | 80 | 22 | 50 | 7/8 | 79 | 10 | 65 | 80 | 20 | 200.000 | A2-01 |
| W3834 | 150 | 25 | 80 | 22 | 50 | 5/7 | 54 | 30 | 48 | 80 | 5 | 156.000 | A2-01 |
| W3819 | 150 | 37 | 90 | 18 | 50 | 7 | 70 | 25 | 52 | 80 | 15 | 160.000 | A2-01 |
| W4022CR* | 150 | 42 | 80 | 22 | 50 | 7/8 | 79 | 10 | 65 | 90 | 20 | 200.000 | A2-01 |
| W4502 | 160 | 43 | 85 | 21 | 60 | 8 | 84 | 0 | 64.5 | 80 | 20 | 300.000 | A2-01 |
| W4023CR* | 173 | 42 | 80 | 22 | 50 | 7/8 | 79 | 10 | 65 | 90 | 20 | 200.000 | A2-01 |
| W4024CR* | 203.2 | 42 | 80 | 22 | 50 | 7/8 | 79 | 10 | 65 | 90 | 20 | 200.000 | A2-01 |

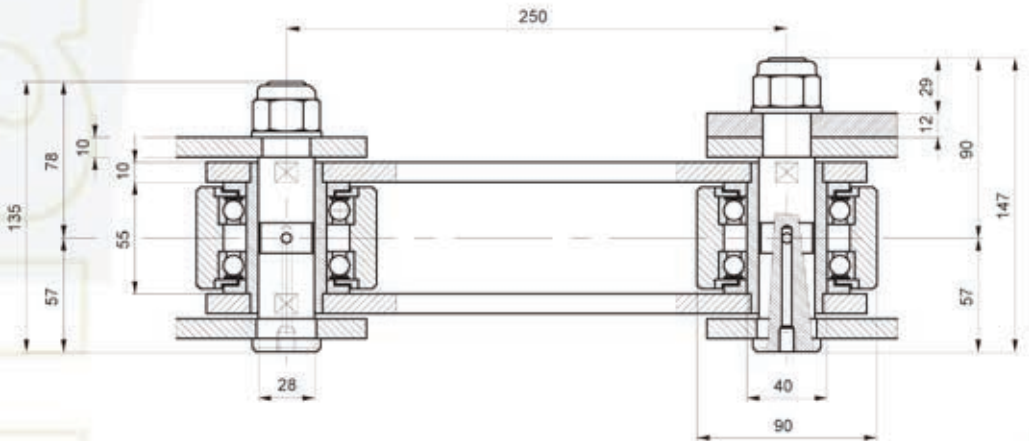
* alternative solutions with L = 32 mm

CHAINS FOR SPECIAL APPLICATIONS – BRICK INDUSTRY



Chain P. 125x25x25 eB

 Breaking load: 100.000 N



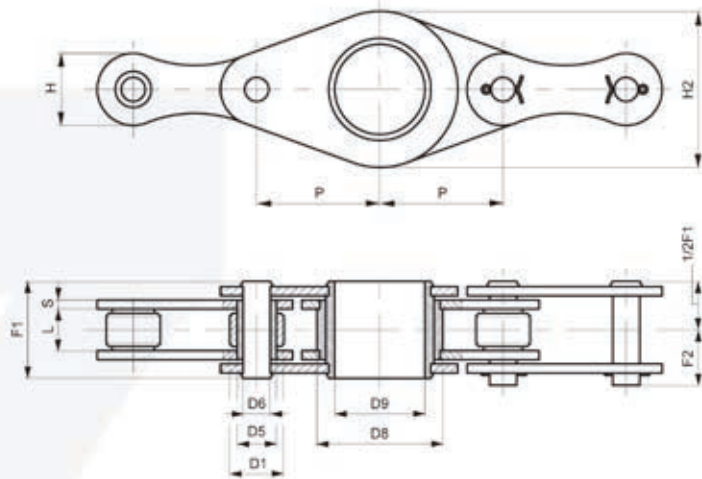
SHOVEL
EXCAVATORS

Chain P. 250x55x90 eR

 Breaking load: 500.000 N

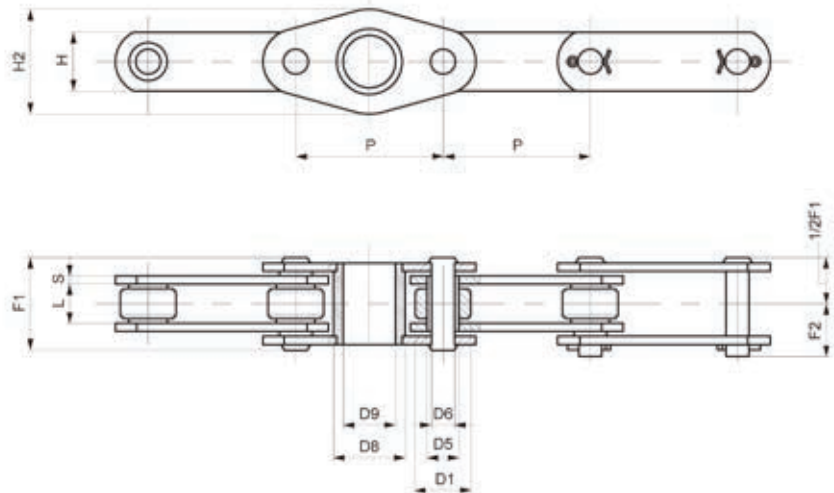
CHAINS FOR SPECIAL APPLICATIONS – AGRICULTURAL MACHINES

ROUND BALERS



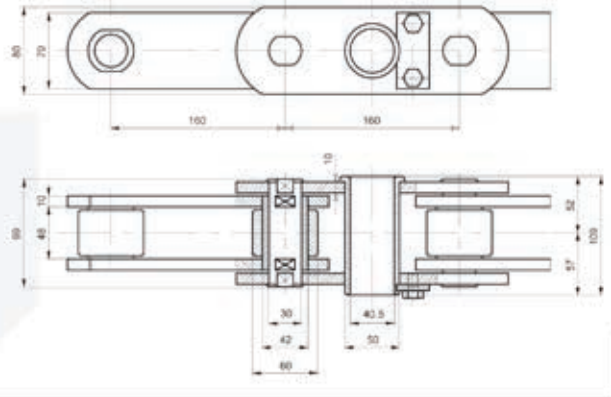
| Chain N. | P mm | L mm | D1 mm | D5 mm | D6 mm | H mm | H2 mm | S mm | D8 mm | D9 mm | F1 mm | F2 mm | Breaking load N | Notes |
|-----------|------|------|-------|-------|-------|------|-------|------|-------|-------|-------|-------|-----------------|--------------------------|
| A5080.. | 50,8 | 20 | 19 | 13,2 | 9,6 | 25,5 | 63 | 4 | 48 | 35,5 | 40,5 | 24 | 100.000 | Attachment every 6 links |
| A508004.. | 50,8 | 20 | 19 | 13,2 | 9,6 | 25,5 | 63 | 4 | 48 | 35,5 | 40,5 | 24 | 100.000 | Attachment every 4 links |

LOADING FORAGE FEEDING



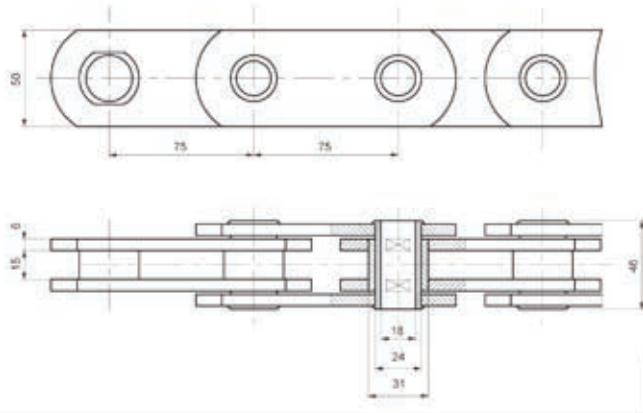
| Chain N. | P mm | L mm | D1 mm | D5 mm | D6 mm | H mm | H2 mm | S mm | D8 mm | D9 mm | F1 mm | F2 mm | Breaking load N | Notes |
|-----------|------|------|-------|-------|-------|------|-------|------|-------|-------|-------|-------|-----------------|--------------------------|
| A7020.. | 70 | 15 | 20 | 13,2 | 10 | 25 | 46 | 4 | 32 | 26 | 36,6 | 21 | 100.000 | Attachment every 6 links |
| A702002.. | 70 | 15 | 20 | 13,2 | 10 | 25 | 46 | 4 | 32 | 26 | 36,6 | 21 | 100.000 | Attachment every 2 links |

CHAINS FOR SPECIAL APPLICATIONS – PATERNOSTER



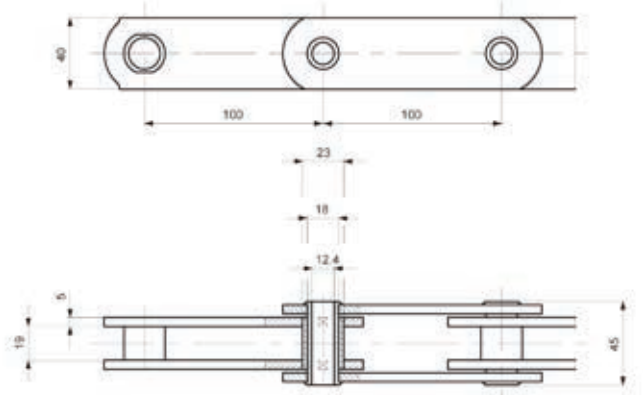
Chain P. 160x48x60 eR

 Breaking load: 520.000 N



Chain P. 75x15x31 eB

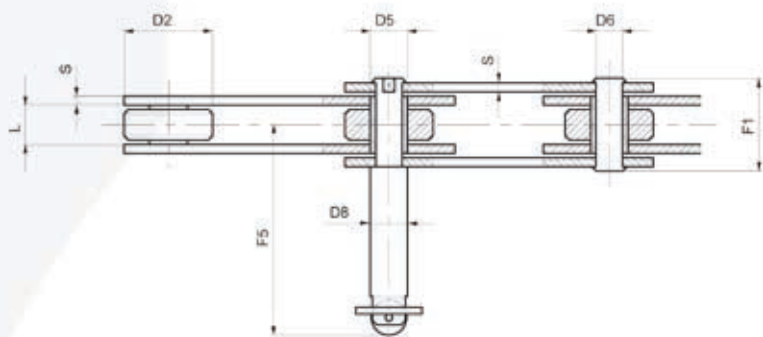
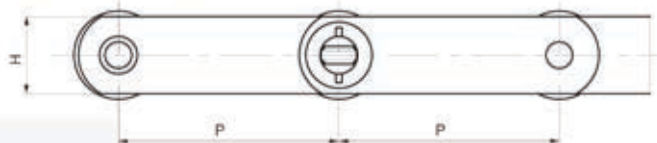
 Breaking load: 120.000 N



Chain P. 100x19x23 eB

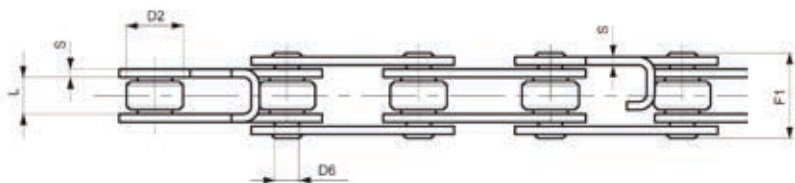
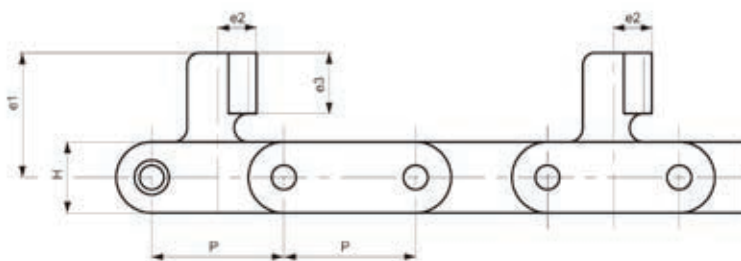
 Breaking load: 100.000 N

CHAINS FOR SPECIAL APPLICATIONS – FURNITURE INDUSTRY



PAINT LINES

| Chain N. | P mm | L mm | D2 mm | D5 mm | D6 mm | D8 mm | H mm | S mm | F1 mm | F5 mm | Breaking load N |
|----------|------|------|-------|-------|-------|-------|------|------|-------|-------|-----------------|
| W2030 | 75 | 18 | 40 | 17 | 12 | 17 | 35 | 4 | 39 | 94 | 75.000 |
| W1555 | 100 | 18 | 40 | 17 | 12 | 17 | 35 | 4 | 39 | 94 | 75.000 |

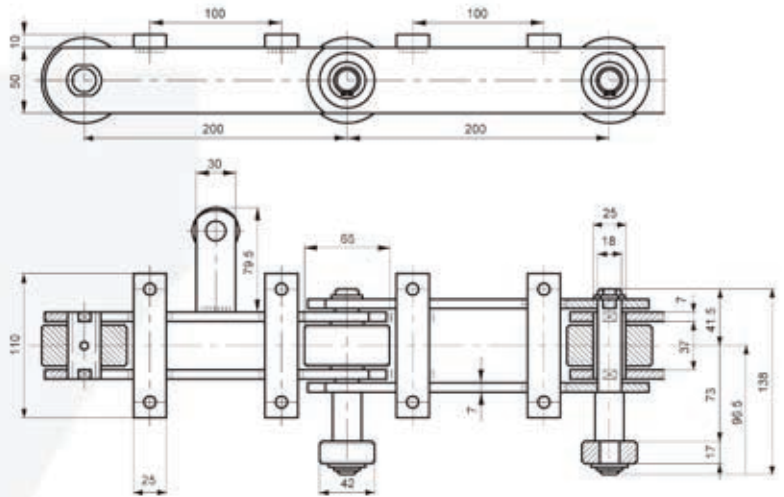


DRYING

| Chain N. | P mm | L mm | D2 mm | D6 mm | H mm | S mm | F1 mm | e1 mm | e2 mm | e3 mm | Breaking load N |
|----------|------|------|-------|-------|------|------|-------|-------|-------|-------|-----------------|
| W2439 | 65 | 18 | 28 | 12 | 35 | 4 | 39 | 55,5 | 8 | 25 | 125.000 |
| W2120R | 75 | 15 | 40 | 12 | 35 | 4 | 36,5 | 55,5 | 8 | 25 | 125.000 |
| W1127R03 | 65 | 18 | 28 | 12 | 35 | 4 | 40 | 61,5 | 12 | 30 | 125.000 |
| W2756R | 60 | 15 | 31 | 12 | 35 | 4 | 36 | 55,5 | 8 | 25 | 125.000 |

CHAINS FOR SPECIAL APPLICATIONS – POLYURETHANE PANEL APPLICATIONS

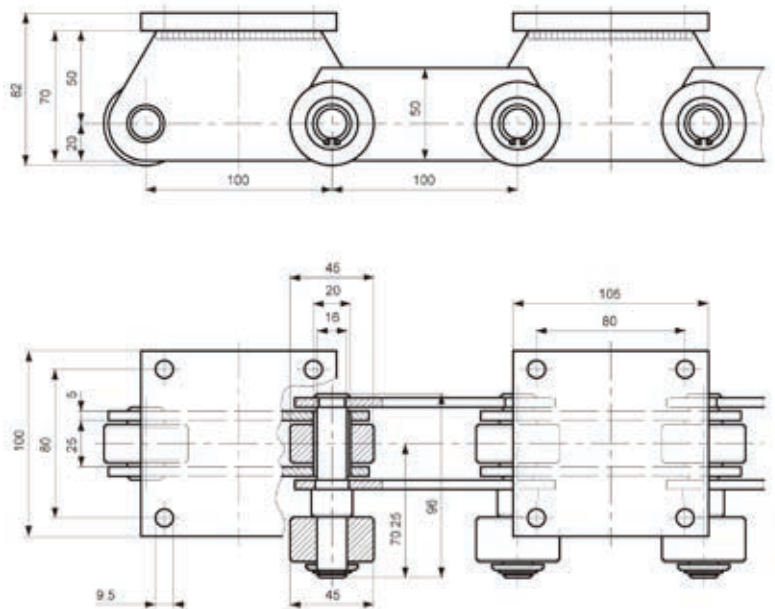
CONDITIONING TUNNEL



Chain P. 200x37x65 eR

 Breaking load: 210.000 N

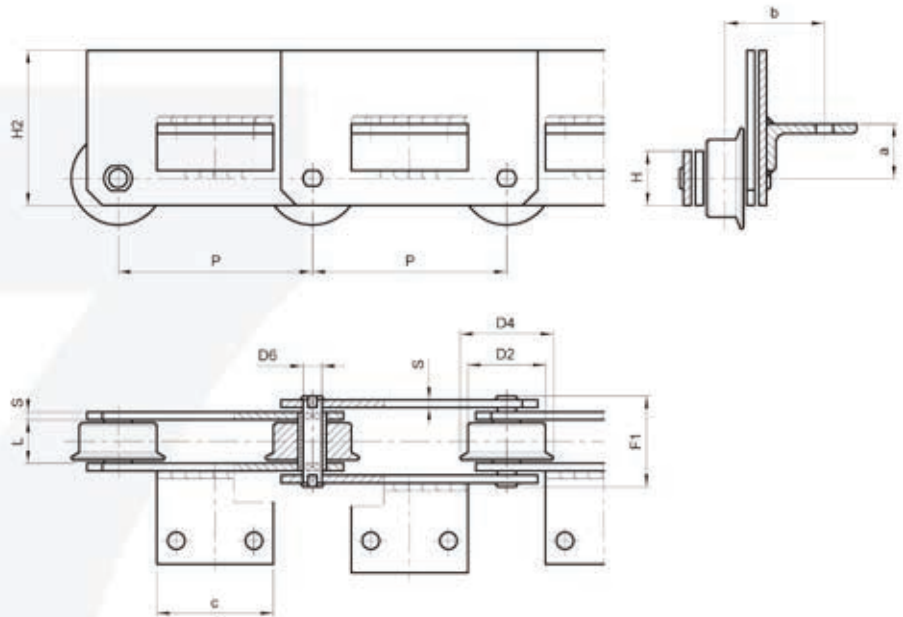
CONDITIONING TUNNEL



Chain P. 100x25x45 eR

 Breaking load: 210.000 N

CHAINS FOR SPECIAL APPLICATIONS – WASTE PAPER AND WASTE RECYCLING INDUSTRY



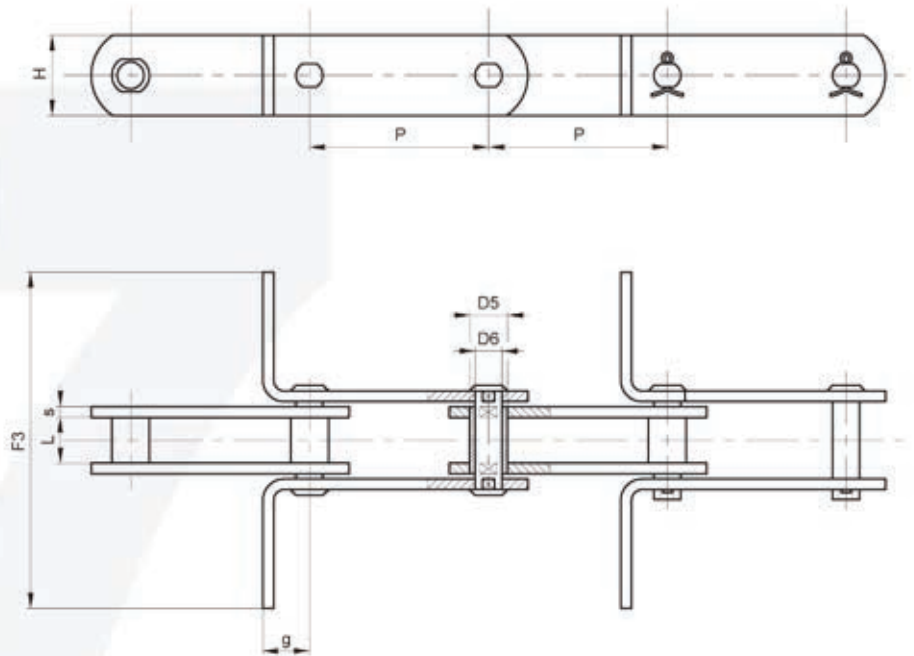
SOLID PIN CHAINS

| Chain N. | P mm | L mm | D2 mm | D4 mm | D6 mm | H mm | H2 mm | S mm | a mm | b mm | F1 mm | Breaking load N | Attachment type |
|----------|------|------|-------|-------|-------|------|-------|------|------|------|-------|-----------------|---------------------|
| W1743 | 100 | 24 | 40 | / | 12 | 35 | / | 4 | 26 | 38,5 | 45 | 75.000 | A1-01 |
| W4563• | 125 | 25 | 40 | / | 14 | 35 | / | 5 | -2,5 | 41 | 51,5 | 100.000 | A2-01 |
| W4122 | 125 | 28 | 50 | 65 | 12 | 35 | 100 | 5 | 35 | 64 | 54,5 | 80.000 | A2-01 |
| W4123• | 125 | 28 | 50 | 65 | 12 | 35 | 100 | 5 | -5 | 64 | 54,5 | 80.000 | A2-01 |
| W4122A | 125 | 28 | 50 | 65 | 12 | 35 | 100 | 5 | 35 | 48 | 54,5 | 80.000 | A2-01 |
| W4123A• | 125 | 28 | 50 | 65 | 12 | 35 | 100 | 5 | -7 | 48 | 54,5 | 80.000 | A2-01 |
| W4123B• | 125 | 28 | 50 | 65 | 12 | 35 | 100 | 5 | -7 | 48 | 54,5 | 80.000 | A2-02 |
| W3946 | 200 | 32 | 60 | / | 15 | 40 | 90 | 6 | / | / | 63 | 112.000 | without attachments |
| W3946R | 200 | 32 | 60 | 75 | 15 | 40 | 90 | 6 | / | / | 63 | 180.000 | without attachments |
| W4587 | 200 | 36 | 65 | 80 | 20 | 50 | 100 | 8 | 26 | 70 | 77 | 175.000 | A2-01 |
| W4124 | 200 | 37 | 70 | 90 | 18 | 50 | 120 | 7 | 55 | 80 | 72 | 160.000 | A2-01 |
| W4125• | 200 | 37 | 70 | 90 | 18 | 50 | 120 | 7 | -5 | 80 | 72 | 160.000 | A2-01 |
| W4639• | 200 | 37 | 70 | 90 | 18 | 50 | 80 | 7 | -10 | 80 | 72 | 160.000 | A2-01 |
| W4124R | 200 | 37 | 70 | 90 | 18 | 50 | 120 | 7 | 55 | 80 | 72 | 260.000 | A2-01 |
| W4125R• | 200 | 37 | 70 | 90 | 18 | 50 | 120 | 7 | -5 | 80 | 72 | 260.000 | A2-01 |

* angle only on the inner links

• position of the attachment under the center line of chain

CHAINS FOR SPECIAL APPLICATIONS – GRAIN CONVEYORS DIN 8167



SCRAPER CHAINS

| Chain N. | P mm | L mm | D5 mm | D6 mm | H mm | s mm | g mm | F3 mm | Breaking load N | Chain weight kg/m ● |
|----------|------|------|-------|-------|------|------|------|-------|-----------------|---------------------|
| MR56 | 100 | 24 | 15 | 10 | 30 | 4 | 20 | ○ | 56.000 | 2,8 |
| " | 125 | 24 | " | " | " | " | " | ○ | " | 2,6 |
| MR80 | 100 | 28 | 18 | 12 | 35 | 5 | 25 | ○ | 80.000 | 4,3 |
| " | 125 | 28 | " | " | " | " | " | ○ | " | 4 |
| " | 150 | 28 | " | " | " | " | " | ○ | " | 3,7 |
| MR112 | 100 | 32 | 21 | 15 | 40 | 6 | 35 | ○ | 112.000 | 6,2 |
| " | 125 | 32 | " | " | " | " | " | ○ | " | 5,7 |
| " | 150 | 32 | " | " | " | " | " | ○ | " | 5,3 |
| MR160 | 100 | 37 | 25 | 18 | 50 | 7 | 40 | ○ | 160.000 | 9,7 |
| " | 125 | 37 | " | " | " | " | " | ○ | " | 8,9 |
| " | 150 | 37 | " | " | " | " | " | ○ | " | 8,2 |
| MR224 | 125 | 43 | 30 | 21 | 60 | 8 | 44 | ○ | 224.000 | 13 |
| " | 150 | 43 | " | " | " | " | " | ○ | " | 12 |
| " | 200 | 43 | " | " | " | " | " | ○ | " | 11 |
| MR315 | 150 | 48 | 36 | 25 | 70 | 10 | 50 | ○ | 315.000 | 18,3 |
| " | 200 | 48 | " | " | " | " | " | ○ | " | 16,7 |
| " | 250 | 48 | " | " | " | " | " | ○ | " | 15,6 |

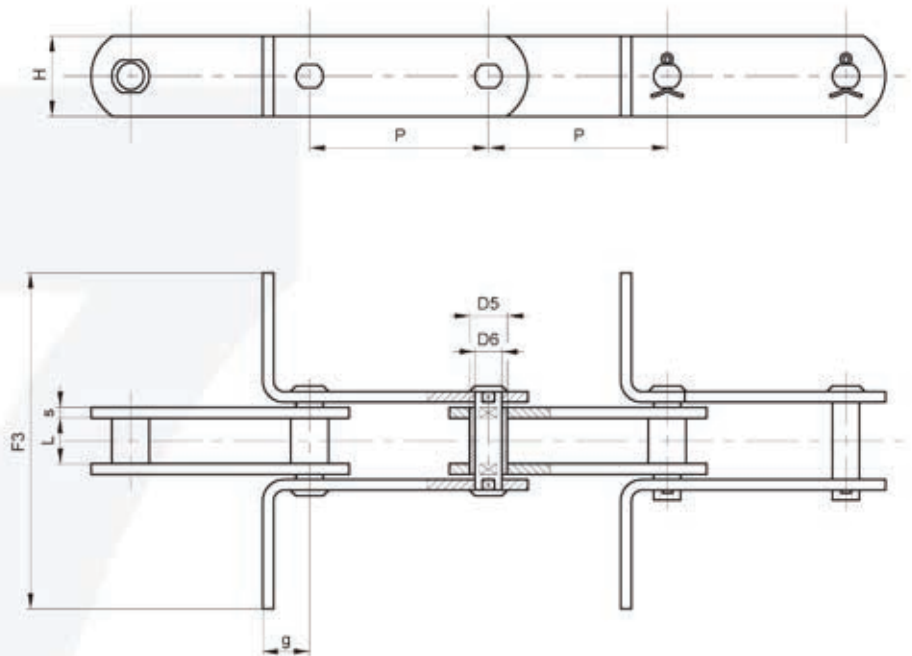
Additional features:

- cotted on one or both sides
- with holes in scrapers
- stainless steel

● without scrapers

○ free dimensions

CHAINS FOR SPECIAL APPLICATIONS – GRAIN CONVEYORS DIN 8165



SCRAPER CHAINS

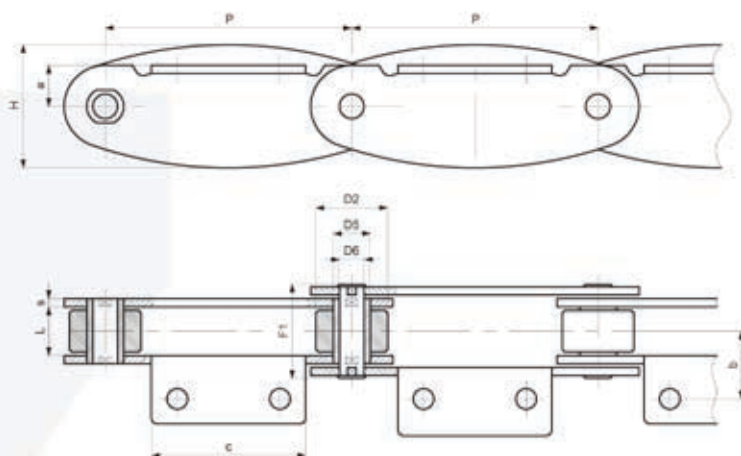
| DIN N. | Chain N. | P mm | L mm | D5 mm | D6 mm | H mm | s mm | g mm | F3 mm | Breaking load N | Chain weight kg/m ● |
|--------|----------|------|------|-------|-------|------|------|------|-------|-----------------|---------------------|
| FV40 | CR42 | 80 | 18 | 15 | 10 | 25 | 3 | 25 | ○ | 42.000 | 1,9 |
| " | " | 100 | " | " | " | " | " | " | ○ | " | 1,7 |
| " | " | 125 | " | " | " | " | " | " | ○ | " | 1,6 |
| FV63 | CR64 | 100 | 22 | 18 | 12 | 30 | 4 | 25 | ○ | 64.000 | 3 |
| " | " | 125 | " | " | " | " | " | " | ○ | " | 2,7 |
| " | " | 150 | " | " | " | " | " | " | ○ | " | 2,4 |
| FV90 | CR100 | 100 | 25 | 20 | 14 | 35 | 5 | 30 | ○ | 100.000 | 4,5 |
| " | " | 125 | " | " | " | " | " | " | ○ | " | 4,2 |
| " | " | 150 | " | " | " | " | " | " | ○ | " | 4 |
| FV112 | CR120 | 100 | 30 | 22 | 16 | 40 | 6 | 35 | ○ | 120.000 | 6,7 |
| " | " | 125 | " | " | " | " | " | " | ○ | " | 6 |
| " | " | 150 | " | " | " | " | " | " | ○ | " | 5,5 |
| FV140 | CR145 | 100 | 35 | 26 | 18 | 45 | " | 38 | ○ | 145.000 | 7,4 |
| " | " | 125 | " | " | " | " | " | " | ○ | " | 6,7 |
| " | " | 150 | " | " | " | " | " | " | ○ | " | 6 |
| FV180 | CR190 | 125 | 45 | 30 | 20 | 50 | 8 | 44 | ○ | 190.000 | 10,5 |
| " | " | 150 | " | " | " | " | " | " | ○ | " | 10,2 |
| " | " | 200 | " | " | " | " | " | " | ○ | " | 9,6 |
| FV250 | CR275 | 125 | 55 | 36 | 26 | 60 | " | 50 | ○ | 275.000 | 13,4 |
| " | " | 150 | " | " | " | " | " | " | ○ | " | 12,3 |
| " | " | 200 | " | " | " | " | " | " | ○ | " | 11,3 |

Additional features:
 - coated on one or both sides
 - with holes in scrapers
 - stainless steel

● without scrapers
 ○ free dimensions

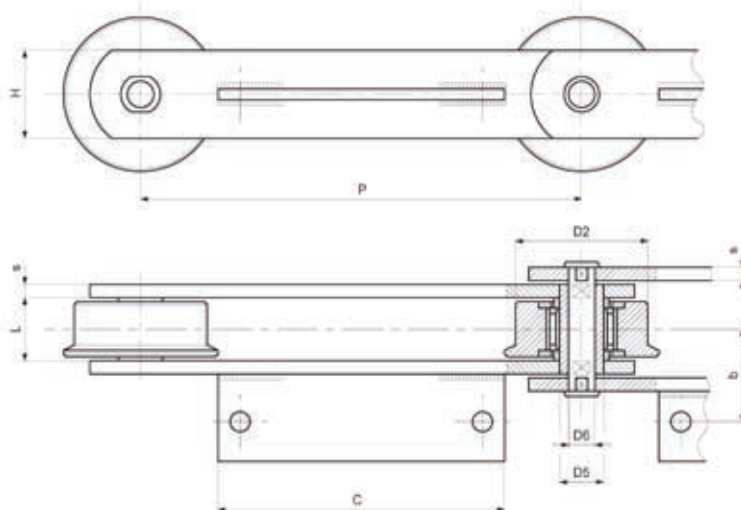
CHAINS FOR SPECIAL APPLICATIONS – TOBACCO

DRYING
TUNNEL



| Chain N. | P mm | L mm | D2 mm | D6 mm | H mm | S mm | F1 mm | a mm | b mm | c mm | Breaking load N |
|----------|------|------|-------|-------|------|------|-------|------|------|------|-----------------|
| W3571 | 120 | 22 | 35 | 12 | 60 | 4 | 43 | 20 | 33 | 75 | 90.000 |

DRYING
TUNNEL

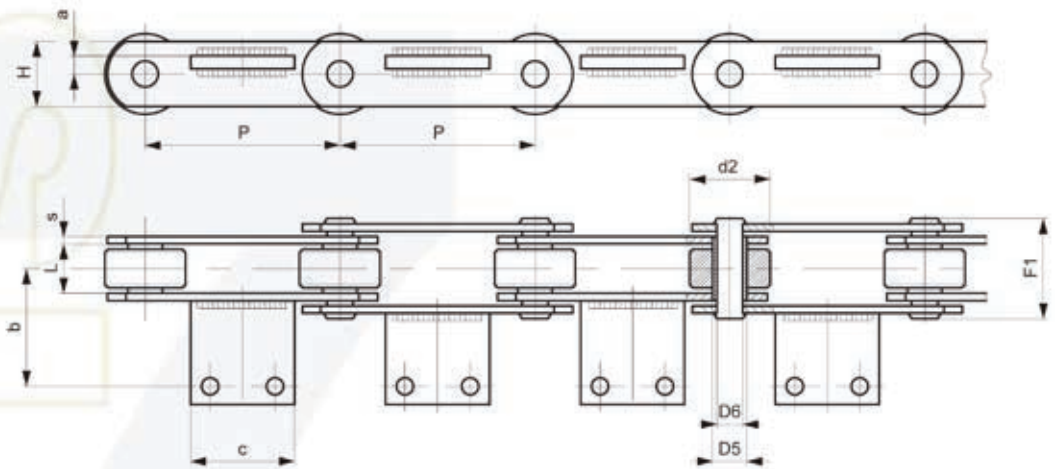


| Chain N. | P mm | L mm | D2 mm | D6 mm | H mm | S mm | F1 mm | a mm | b mm | c mm | Breaking load N |
|----------|------|------|-------|-------|------|------|-------|------|------|------|-----------------|
| W3616 | 200 | 28 | 60/70 | 12 | 40 | 5 | 55 | 2,5 | 42 | 130 | 60.000 |
| W4088A | 200 | 28 | 50/60 | 14 | 40 | 5 | 55 | -2,5 | 40 | 110 | 130.000 |
| W3840R** | 200 | 37 | 60/70 | 20 | 40 | 5 | 64 | 2,5 | 46,5 | 130 | 150.000 |
| W4919SS* | 200 | 37 | 60/70 | 15 | 40 | 5 | 64 | 2,5 | 46,5 | 130 | 90.000 |
| W4664 | 200 | 38 | 67/82 | 15 | 45 | 6 | 69 | -2,5 | 47 | 110 | 180.000 |

* chain in stainless steel

** without needle casing

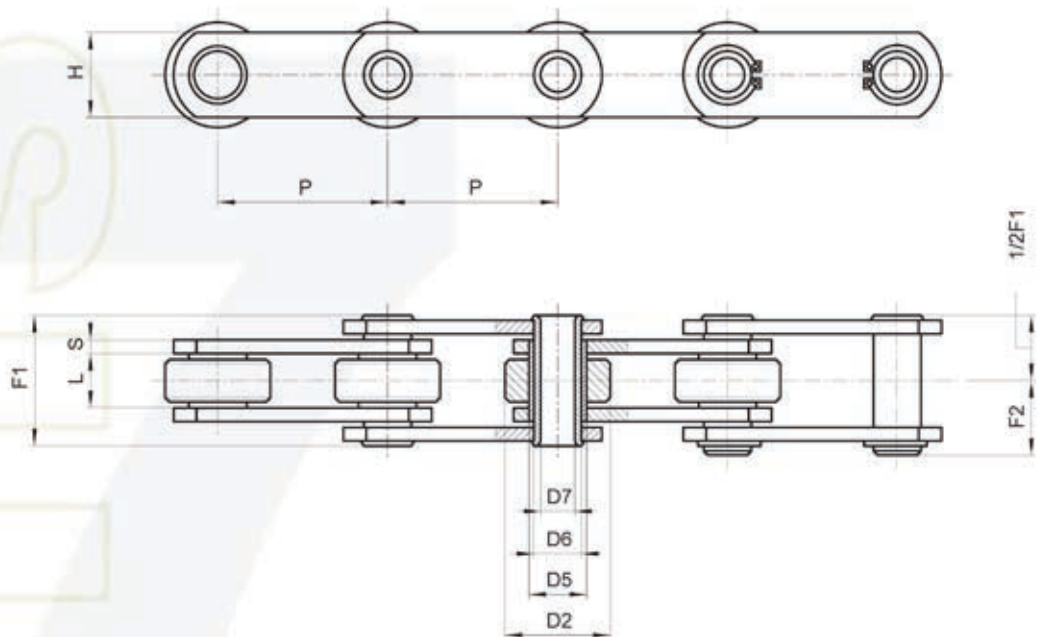
CHAINS FOR SPECIAL APPLICATIONS – TOBACCO



DRYING
TUNNEL

| Chain N. | P mm | L mm | D2 mm | D6 mm | H mm | S mm | F1 mm | a mm | b mm | c mm | Breaking load N | Notes |
|----------|------|------|---------|-------|------|-------|-------|------|------|------|-----------------|----------------|
| W3977 | 75 | 15 | 31 | 10 | 25 | 4 | 36 | 7 | 33 | 40 | 45.000 | |
| W1383 | 100 | 15 | 55 | 12 | 30 | 4 | 36 | 23 | 40 | 50 | 70.000 | |
| W4010 | 100 | 26,5 | 50 | 12,6 | 35 | 5 | 54 | 6 | 41,5 | 55 | 100.000 | |
| W3596R | 100 | 26,5 | 50 | 12 | 35 | 5 | 54 | -14 | 49,5 | 35 | 100.000 | |
| W3458R | 100 | 28 | 50 | 14,4 | 35 | 5 | 54,5 | 14 | 49,5 | 35 | 130.000 | |
| W2988CR | 200 | 26,5 | 60 | 16 | 40 | 5 | 54 | 2,5 | 43,5 | 130 | 150.000 | |
| W2520 | 200 | 28 | 65 | 18 | 50 | 6 | 59 | 13 | 53 | 60 | 160.000 | |
| W4088 | 200 | 28 | 50/60 | 12 | 40 | 5 | 59 | -2,5 | 40 | 110 | 100.000 | flanged roller |
| W3808 | 200 | 37 | 70 | 18 | 50 | 7 | 72 | 3 | 62 | 115 | 260.000 | |
| W3840R | 200 | 37 | 60/70 | 12,4 | 40 | 5 | 63,5 | 2,5 | 46,5 | 130 | 110.000 | flanged roller |
| W3782 | 200 | 38,5 | 100/112 | 30 | 80 | 10/12 | 91 | 3 | 73 | 95 | 850.000 | flanged roller |
| W3790 | 200 | 38,5 | 100/112 | 36 | 90 | 12 | 97 | -3,5 | 73 | 95 | 1.600.000 | flanged roller |

CHAINS FOR SPECIAL APPLICATIONS – SWARF HANDLING



HOLLOW PIN CHAINS

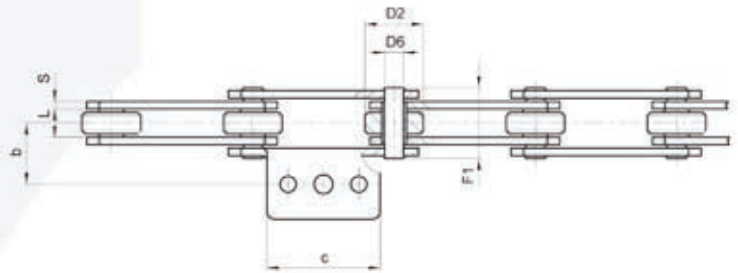
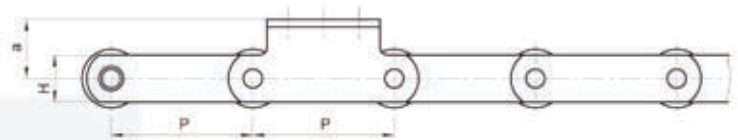
| Chain N. | P mm | L mm | D2 mm | D5 mm | D6 mm | D7 mm | H mm | S mm | F1 mm | F2 mm | Breaking load N | Chain weight kg/m |
|-------------|-------|------|-------|-------|-------|-------|------|------|-------|-------|-----------------|-------------------|
| C2059 | 31,75 | 9,53 | 19,05 | 10,2 | 7,02 | 5,12 | 15 | 2 | 20,1 | 11,5 | 19.600 | 1,2 |
| W2056 | 38,1 | 12,7 | 22,23 | 11 | 9 | 6,2 | 18 | 2,5 | 25,5 | 13,75 | 26.500 | 1,9 |
| 3520Z | 35 | 16 | 20 | 17 | 14 | 10,2 | 26 | 2,5 | 30 | 16,7 | 25.000 | 2,2 |
| W1667 | 40 | 9 | 22 | 12 | 9 | 6,2 | 18 | 2,5 | 23 | 13 | 15.500 | 1,7 |
| W1948 | 40 | 13 | 25 | 15 | 12 | 8,9 | 22 | 3 | 29 | 16,7 | 21.000 | 2,4 |
| 400C ♦ | 50 | 15 | 31 | 17 | 14 | 10,2 | 25 | 3 | 31 | 17,5 | 35.000 | 3 |
| W3635 | 50 | 15 | 31 | 17 | 14 | 10,2 | 25 | 3 | 31 | 17,5 | 35.000 | 3 |
| 500C | 50 | 15 | 31 | 17 | 14 | 10,2 | 25 | 4 | 35 | 19,5 | 40.000 | 3,6 |
| 500CSS* | 50 | 15 | 31 | 17 | 14 | 10,5 | 25 | 4 | 36 | 19,5 | 35.000 | 3,6 |
| W4086Z | 50 | 15 | 40 | 17 | 14 | 10,5 | 25 | 4 | 36 | 19,5 | 40.000 | 3,8 |
| W2795 | 50 | 11,5 | 25 | 16 | 13,2 | 10,5 | 23 | 2,5 | 25 | 15 | 16.000 | 1,8 |
| W2137R | 63 | 15 | 40 | / | 16 | 12,3 | 28,5 | 4 | 35 | 20 | 80.000 | 4,7 |
| W4501 | 63 | 21,5 | 40 | / | 16 | 10,5 | 28,5 | 4 | 42 | 22 | 50.000 | 4,7 |
| W5048 | 63 | 18 | 40 | 17 | 14 | 10,2 | 28 | 4 | 38 | 20,5 | 50.000 | 4,1 |
| 6540C | 65 | 18 | 40 | 17 | 14 | 10,2 | 25 | 4 | 38 | 21 | 40.000 | 4,8 |
| 701C | 75 | 22 | 40 | 23 | 18 | 12,2 | 35 | 4 | 42 | 24 | 60.000 | 4,6 |
| W4671R | 75 | 18 | 40 | / | 20 | 15,2 | 30 | 4 | 38,5 | 21,5 | 55.000 | 4,7 |
| 703C | 100 | 22 | 40 | 23 | 18 | 12,2 | 35 | 4 | 42 | 24 | 60.000 | 4,6 |
| 704C | 125 | 22 | 40 | 23 | 18 | 12,2 | 35 | 4 | 42 | 24 | 60.000 | 4,2 |
| W1521/1 ▲ | 125 | 30 | 60/76 | 25 | 20 | 14,5 | 40 | 5 | 56 | 31 | 70.000 | 9 |
| ZC150C1524X | 152,4 | 25,4 | 66,7 | 33 | 26,9 | 20,1 | 50 | 7/5 | 58 | 34,5 | 150.000 | 9,7 |

* stainless steel chain

♦ chain with shaped plates

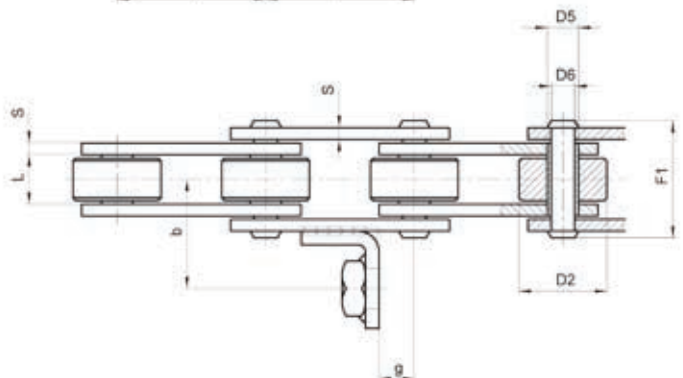
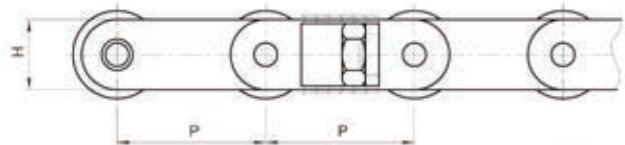
▲ chain with flanged rollers

CHAINS FOR SPECIAL APPLICATIONS – SWARF HANDLING



SOLID PIN CHAINS

| Chain N. | P mm | L mm | D2 mm | D6 mm | H mm | S mm | F1 mm | a mm | b mm | c mm | Breaking load N | Chain weight kg/m |
|-----------|-------|------|-------|-------|------|------|-------|------|------|------|-----------------|-------------------|
| C2052A204 | 31,75 | 9,6 | 19 | 5,1 | 15,1 | 2 | 20,4 | 11,1 | 15,9 | 25,4 | 26.500 | 1,3 |
| W4218 | 42 | 22 | 18 | 5,7 | 20 | 4 | 42,5 | 35 | 45 | 30 | 32.000 | 2,9 |
| 500 | 50 | 15 | 31 | 10 | 25 | 4 | 36,6 | 22 | 45 | 45 | 45.000 | 3,9 |
| 205BA108 | 50 | 11,5 | 25 | 5,7 | 18 | 2,5 | 25,9 | 14 | 33 | 46 | 18.000 | 1,8 |
| 703BA310 | 100 | 22 | 40 | 12 | 35 | 4 | 44 | 26 | 38 | 70 | 75.000 | 5 |

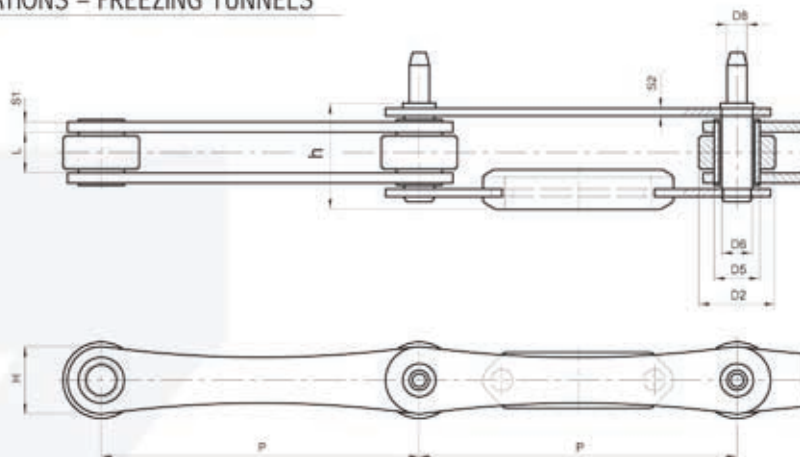


SOLID PIN CHAINS

| Chain N. | P mm | L mm | D2 mm | D5 mm | D6 mm | H mm | S mm | F1 mm | g mm | b mm | Breaking load N | Chain weight kg/m |
|----------|------|------|-------|-------|-------|------|------|-------|------|------|-----------------|-------------------|
| W1949AR | 38,1 | 12,7 | 22,2 | 8 | 6 | 18 | 3 | 30 | 9 | 28 | 38.000 | 3,3 |
| W4584 | 63 | 22 | 40 | 17 | 12 | 30 | 4 | 43 | 16,5 | 34 | 66.000 | 6,1 |

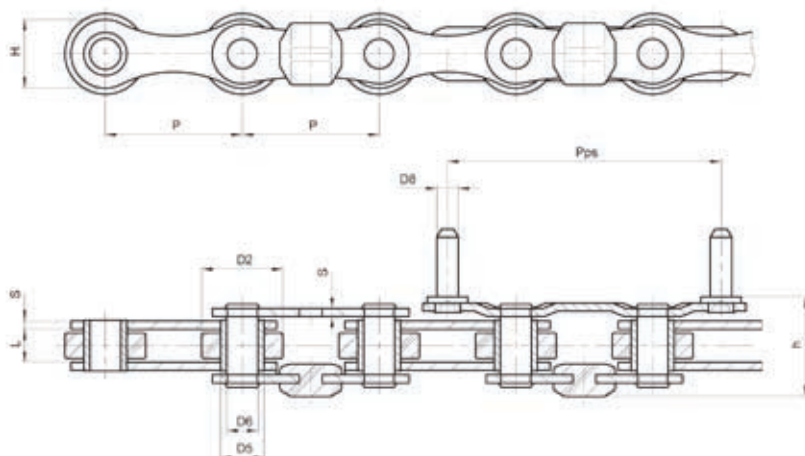
CHAINS FOR SPECIAL APPLICATIONS – FREEZING TUNNELS

HARDENING
TUNNEL



| Chain N. | P mm | L mm | D2 mm | D5 mm | D6 mm | D8 mm | H mm | S1/S2 mm | h mm | Breaking load N |
|----------|-------|------|-------|-------|-------|-------|------|----------|------|-----------------|
| W4577* | 63,5 | 10 | 30 | 18 | 10 | 7,9 | 26,5 | 3 | 31,2 | 30.000 |
| W5071* | 95,25 | 16 | 30 | 18 | 11,9 | 9 | 26,5 | 4/3 | 36,8 | 40.000 |
| W4530* | 125 | 14 | 30 | 18 | 11,8 | 7,9 | 26,5 | 4/3 | 36,5 | 45.000 |
| W4578* | 125 | 16 | 30 | 18 | 11,8 | 7,9 | 26,5 | 4/3 | 39,8 | 40.000 |
| W4967* | 127 | 10 | 30 | 16 | 11,5 | 7,9 | 26,5 | 3 | 31,3 | 30.000 |
| W4899* | 150 | 16 | 30 | 18 | 11,9 | 7,9 | 26,5 | 4/3 | 42,8 | 40.000 |

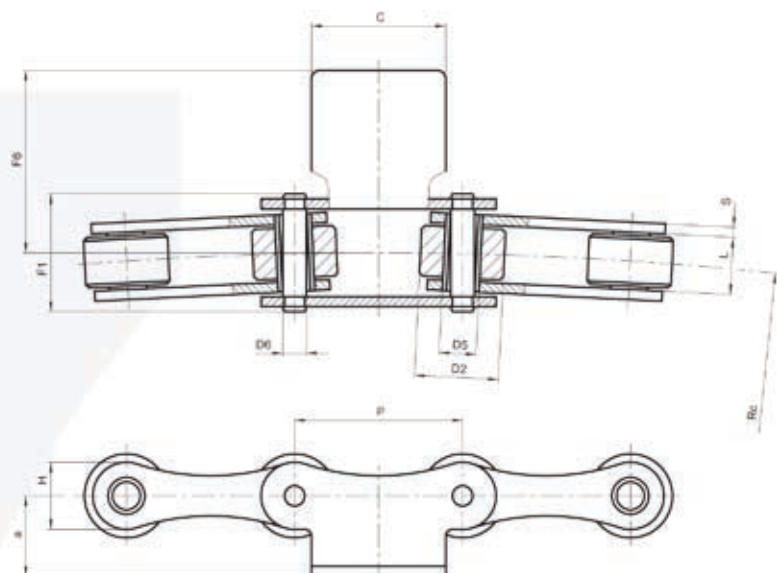
HARDENING
TUNNEL



| Chain N. | P mm | L mm | D2 mm | D5 mm | D6 mm | D8 mm | H mm | S mm | h mm | Pps mm | Breaking load N |
|----------|------|------|-------|-------|-------|-------|------|------|------|--------|-----------------|
| W4813* | 50,8 | 10 | 30 | 16 | 11,5 | 8 | 25,2 | 3 | 29,3 | 101,6 | 34.000 |

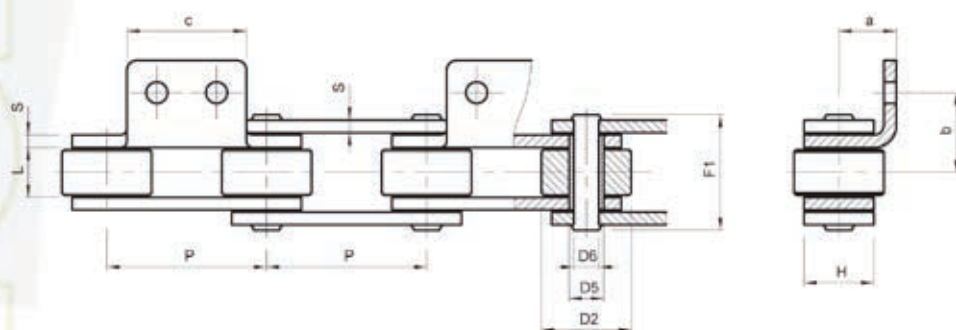
CHAINS FOR SPECIAL APPLICATIONS – FREEZING TUNNELS

HARDENING
TUNNEL



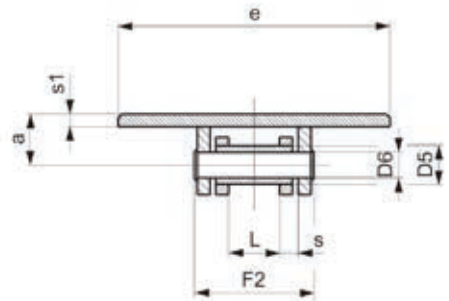
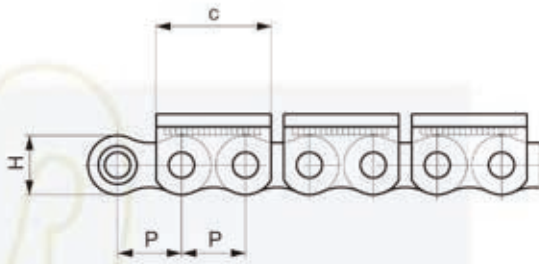
| Chain N. | P mm | L mm | D2 mm | D5 mm | D6 mm | H mm | S mm | F1 mm | a mm | c mm | F6 mm | Breaking load N | Notes |
|----------|------|------|-------|-------|-------|------|------|-------|------|------|-------|-----------------|----------------------------|
| W1947* | 50 | 17 | 25 | 11 | 7 | 20 | 3 | 33,5 | -24 | 40 | 54 | 30.000 | attachm. position variable |

HARDENING
TUNNEL



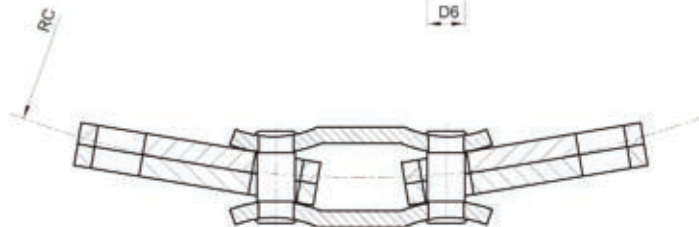
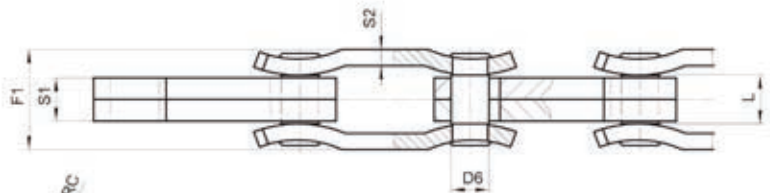
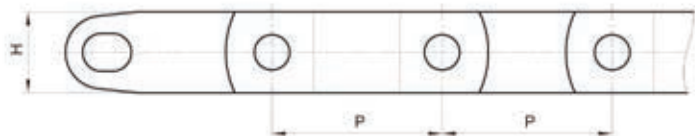
| Chain N. | P mm | L mm | D2 mm | D5 mm | D6 mm | H mm | S mm | F1 mm | a mm | b mm | c mm | Breaking load N |
|-----------|------|------|-------|-------|-------|------|------|-------|-------|------|------|-----------------|
| W4528ASS* | 50,8 | 15,9 | 28,6 | 11 | 7,9 | 22,2 | 4 | 36,5 | 18,25 | 25,4 | 38 | 25.000 |
| W4528PSS* | 50,8 | 15,9 | 28,6 | 11 | 7,9 | 22,2 | 4 | 36,5 | 18,25 | 17,5 | 38 | 25.000 |

CHAINS FOR SPECIAL APPLICATIONS – SLIDING CHAIN CONVEYORS



SOLID PIN CHAINS

| Chain N. | P mm | L mm | D5 mm | D6 mm | H mm | S mm | F2 mm | a mm | c mm | e mm | s mm | Breaking load N | Chain weight kg/m |
|----------|------|------|-------|-------|------|------|-------|------|------|------|------|-----------------|-------------------|
| TB85 | 20 | 16 | 12 | 8 | 18,5 | 3 | 36 | 15,5 | 36 | 85 | 4 | 20.000 | 4,7 |

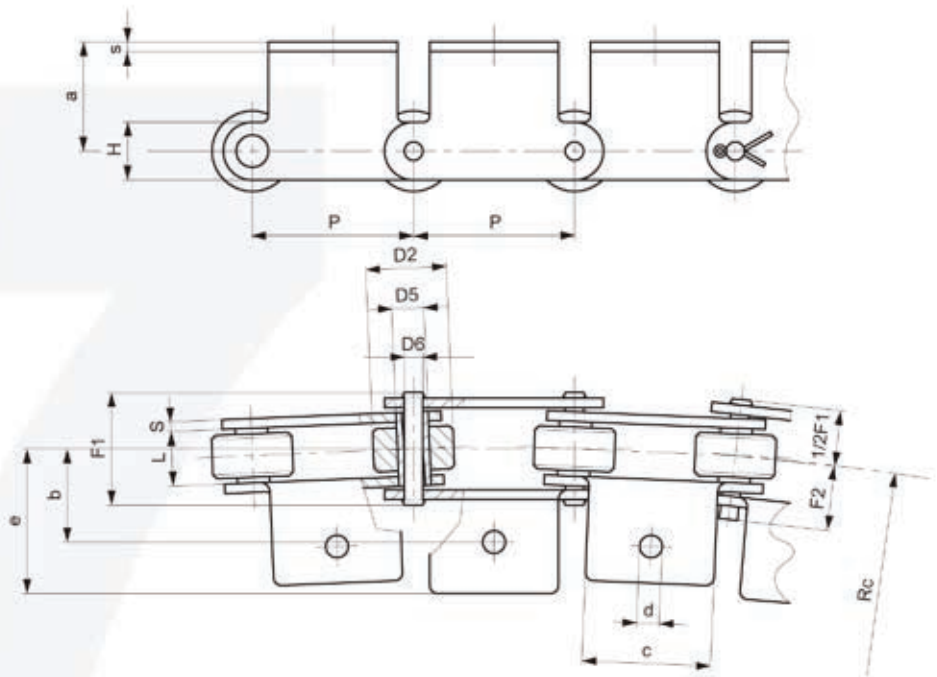


SOLID PIN CHAINS

| Chain N. | P mm | L mm | D6 mm | H mm | S1 mm | S2 mm | F1 mm | ** RC mm | Breaking load N | Chain weight kg/m |
|----------|-------|------|-------|------|-------|-------|-------|----------|-----------------|-------------------|
| 6285 | 62,85 | 18 | 14 | 30 | 16 | 6 | 38 | 400 | 130.000 | 5,1 |

** RC minimum radius of curvature

CHAINS FOR SPECIAL APPLICATIONS – SIDEBOW CHAIN CONVEYORS



SOLID PIN CHAINS

| Chain N. | P mm | L mm | D2 mm | D5 mm | D6 mm | H mm | S mm | F1 mm | F2 mm | ** RC mm |  Breaking load N | Chain weight kg/m |
|----------|------|------|-------|-------|-------|------|------|-------|-------|----------|---|-------------------|
| C50 | 50 | 17 | 25 | 10 | 5,9 | 18 | 3 | 35 | 20 | 900 | 20.000 | 2,4 |
| C65 | 65 | 17 | 25 | 10 | 5,9 | 18 | 3 | 35 | 20 | 1200 | 20.000 | 2 |

ATTACHMENTS

| Chain N. | P mm | a mm | b mm | c mm | d mm | e mm | s mm | Weight per attach. kg |
|----------|------|------|------|------|------|------|------|-----------------------|
| C50 | 50 | 34 | 29 | 40 | 7 | 45 | 3 | 0,045 |
| C65 | 65 | 34 | 29 | 50 | 7 | 43 | 3 | 0,055 |

** RC: minimum radius of curvature